



Elite series

QUAD

the closest approach to the original sound



Since Peter Walker founded the business in 1936, all Quad products have displayed originality in design, born from a full and proper understanding of every aspect of sound reproduction. A world leader in audio amplifier and electrostatic speaker design, Quad has, over the years, made a major contribution to the improvement of sound quality. This contribution has been recognized by awards from around the world including the Queen's Award for Technological Achievement in 1978 - the only one ever presented to an audio hi-fi equipment manufacturer.

For many people, buying their first Quad sound system can be a life changing experience. They enjoy the confidence of knowing that the

complete system has been engineered to achieve optimal performance, free from compatibility problems. They relax in the knowledge that Quad's legendary service department will give support throughout the system's useful life. They derive pleasure from knowing that Quad is a company of individuals who care about both the design and construction of their products, while sharing their love of music. These are just some of the reasons why we now serve the children, and even grandchildren of our first customers.

Alan Lufkin
Chairman.







Elite Series



* An optional system remote made of cast aluminium is also available. It functions as a universal remote and emulates the functionality of both Elite CDS/CDP and Pre/Integrated remote controls.

Quad's reputation as a manufacturer of high end audio and electronic products engineered using state-of-the-art technology and the latest of innovations has earned the brand numerous recognitions worldwide.

The Elite Series was developed employing the strongest design features derived from its predecessor but exhibits updated internal audiophile-class components, highly specified transformers, multi-layer circuit boards and the most advanced software available. The Elite

design builds upon the classic Quad sound, adding increased clarity and definition but foremost ensuring that the integrity of musical performance is more accessible and that the artist's message is distinctly conveyed despite deficiencies in the recording.

Devised as a fully integrated system, each product in the Elite series works best when paired with one another. Every product is enhanced according to the highest of our engineering standards to ensure that ease of use. Seamless connectivity,

fully balanced audio signal transmission and intelligent control systems that allow complete control via the remote handset is achieved.

Encased in a modern aluminium casework design constructed using superior class cast alloy and finished in deep grey with a matte black front panel which maintains Quad's bold but stylishly elegant aesthetic, the Elite guarantees a valuable investment that will last a lifetime whilst garnering much merit over years of use.



CD Players & FM Tuner

CDS

The Elite CDS brings the highest quality and sound, offering further improvements from the 99 CD Player. Quad's Elite CDS emphasises the ability to read and accurately decode discs, setting it apart from other products in a similar category.

The updated transport mechanism and servo system allows the Elite CDS to recover even more error free data than previous systems. Whether the disc is marked or middle out of specification, Elite CDS can recover the maximum amount of error free data. The digital data stream is regulated by a high-performance master clock, which minimises jitter before being fed to a top-end Crystal 24-bit/192kHz DAC with upsampling. This feature replaces the old 24-bit/96kHz chip.

Quad utilises the highest quality of electronic components throughout, incorporating multi-layer circuit boards and advanced proprietary filtering and control software.

CDP

The Elite CDP uses a bespoke designed transport mechanism optimised to allow the unit to perform at utmost perfection. Its Crystal 24-bit/192kHz DAC converts digital data into analogue signal, which is available as either fixed level for use with a traditional pre-amplifier or as a variable level to allow direct connection to a power amplifier.

It features six digital inputs to accommodate a range of PCM streams coming from digital outputs such as a DAB tuner, TV/satellite box, or computer soundcard and accepts sampling frequencies covering 32kHz to 96kHz.

FM Tuner

The Elite FM has been specially designed to provide high fidelity programme quality. Quad's FM tuner provides strong signal transmissions and high quality reproduction of music broadcasts. Through the Elite FM's specific proprietary "QUADLINK bus system, the tuner can be easily connected to the rest of Quad's Elite system enabling complete system control and a balanced audio transmission.

The Elite FM offers a realistic sound for those who value high quality music broadcasts.

Elite CDS

Elite CDP

Elite FM



Pre Amplifier & Power Amplifiers

Pre

The Elite Pre offers state of the art performance and utilises unique operating features, which puts it in a class of its own.

Through careful component selection and a re-tuning of its signal path, the Elite Pre has even further enhanced the musical transparency delivered by its 99 series predecessor. Along with the updates, Quad has still maintained its advanced features including QUADLINK and AMPBUS connectivity. These features allow the user to connect an almost unlimited number of sources, each with optimal synchronisation. A highly specified phono stage for analogue turntables is built in. All inputs including the phono input for moving-coil and moving-magnet cartridges have adjustable sensitivity settings, making the Elite Pre a usable and integral part of every system.

Elite Pre's flexibility also extends to the wide range of tone-control adjustments, noiseless solid-state signal switching, and digitally addressed analogue volume and balance controls. These track both left and right channels with an unprecedented accuracy, which is better than 0.1dB.

Mono

The Elite Mono has been carefully upgraded to ensure it retains its predecessors' acclaimed musicality, while offering an added drive and greater finesse.

New ultra-low noise transformers have been integrated, and all power supply components have been specially selected after extensive listening tests by Quad's talented designers.

Delivering 150W, the Elite Mono offers instant overload recovery and full protection against over-driving without resorting to output line fuses or relays.

Stereo

The Elite Stereo has been carefully revised to maintain its predecessors' acclaimed musicality, but adds an enhanced drive and resolution for even better sound quality.

New ultra-low noise transformers have been integrated, and all power supply components have been specially selected following extensive listening tests. The Elite Stereo allows instant overload recovery and full protection against overdriving through a 2 x 80W power rating. The quality of the signal fed to the loudspeaker is always clear and without resorting to output line fuses or relays.

Elite Pre

Elite Mono

Elite Stereo







"I'd buy one of these in a heartbeat"
Ken Kessler, *Hi-Fi News*



Hi-Fi News - April 2012



Power Amplifiers



QSP



QMP

QSP & QMP

Quad's most valuable breakthrough is still the method which eliminates problems allied to transistor amplifiers providing a steady performance and eradicating the need for fine tuning adjustments during production, otherwise known as current dumping.

The "current dumping" technique features a very high quality low output power amplifier and a very high power output amplifier. The former emits a signal to compensate for errors between the input signal and the signal fed to the loudspeakers, while the latter controls the loudspeakers at all times and provides the current to generate the sound.

The Elite QSP stereo power amplifier builds upon the features of the popular 909 Stereo. It is ideal for driving low impedance audiophile loudspeakers such as the Quad ESL.

The Elite QMP is also a by-product of the earlier 909 Mono with enhancements distinctly noticeable in amplifier construction and circuitry, and is capable of producing an accurately balanced XLR. Moreover, the new Elite QMP now incorporates 'current dumping' allowing for a cleaner, more versatile performance.

Integrated & Remote



Elite Integrated

The Elite Integrated combines all the qualities of the Elite Pre and Stereo in one single chassis. Quad has gained an impeccable reputation for power amplifiers, never taking away from or adding elements to the original musical content.

A selection of input and output connections and functions are available in the Elite Integrated

complemented by a QUADLINK terminal located at the rear of the unit. The terminal serves as a communication link and provides balanced signal transmission from the Elite CDS and the Elite FM Tuner.

The Elite Integrated is a pure, indulgent product for audiophiles demanding simplicity in operation.

Elite System Remote Control

An optional system remote constructed of cast aluminum is available with the Elite Series. The remote functions as a universal remote and also emulates the functions of both Elite CDS/CDP and Pre/Integrated controls.



Specifications

CD Players

Model Name	Elite CDS	Elite CDP
General Description	Compact Disc Player	Compact Disc Player with Pre-Amp
D/A Converter	Crystal CS4398 24-bit/192kHz DAC	Crystal CS4398 24-bit/192kHz DAC
Input Resolution Signals	-	16-24 bit
Input Sampling Rates	-	32-96kHz
Frequency Response	20Hz – 20kHz (+0dB / -0.7dB)	20Hz – 20kHz (+0dB / -0.7dB)
Max.Audio Line Output	2.4V RMS, RCA 4.8V RMS, Balanced (Quadlink)	2.4V RMS, RCA (Fix & Variable Output) 4.8V RMS, Balanced (Quadlink)
Output Impedance	120 Ω	120 Ω
Total Harmonic Distortion	<0.0013% at 1kHz	<0.0013% at 1kHz
Dynamic Range	>100dB 'A' wtd. 16 bit	>100dB 'A' wtd. 16 bit >117dB 'A' wtd. 24 bit
Signal to Noise Ratio	>113dB, Digital Silence (20Hz – 20kHz) >116dB, Digital Silence (20Hz – 20kHz) 'A' wtd >94 dB, 16bit (20Hz - 20kHz) >97 dB, 16bit (20Hz - 20kHz) 'A' wtd	>113dB, 24bit (20Hz – 20kHz) >116dB, 24bit (20Hz – 20kHz) 'A' wtd >94 dB, 16bit (20Hz - 20kHz) >97 dB, 16bit (20Hz - 20kHz) 'A' wtd
Crosstalk	<-120dB at 1kHz	<-120dB at 1kHz
Digital Audio Inputs	-	3 x RCA Coax 75 Ohms, SPDIF 3 x Optical TosLink, SPDIF
Digital Audio Output	1 x Optical TosLink, SPDIF	1 x Optical TosLink, SPDIF
Disc Compatibility	CD-DA Conventional Audio CD CD-R Recordable CD	CD-DA Conventional Audio CD CD-R Recordable CD
Main Power On/Off Switch	Yes	Yes
Dimensions (H x W x D)	70 x 321 x 310 mm	70 x 321 x 310 mm
Weight	4.5 kg	4.5 kg
Finish	Black	Black
Remote Control	31 keys	31keys

FM Tuner

Model Name	Elite FM
General Description	FM Tuner
Tuning Range	88 – 108MHz
Channel Spacing	50kHz
Sensitivity (30dB quieting)	Mono 8dBuV
Sensitivity (50dB quieting)	Mono 18dBuV Stereo 18dBuV
Full Limiting	<1 μ V (1.2dBf)
Capture Ratio	1.5dB
IF Rejection	>100dB
AM Supression	>60dB
Image Rejection	>80dB
Pilot Tone Supression	>60dB
De-emphasis	50 μ S or 75 μ S
Aerial Input	2 x 75 Ohms unbalanced
Main Power On/Off Switch	No
Dimensions (H x W x D)	70 x 321 x 310 mm
Weight	2.8kg
Finish	Black

Pre Amplifier

Model Name	Elite Pre-Amp
General Description	Stereo Pre Amplifier
Inputs	3 x Aux RCA, 1 x Tape, 1 x Phono MM (MC)
Frequency Response	
Line Inputs	1Hz – 20kHz (+0dB / -0.3dB) 0.1Hz – 55kHz (+/-3dB)
MM & MC Inputs	20Hz – 20kHz (+/-0.4dB)
Phono Inputs MM (MC)	
Sensitivity	1,3, or 7.75mV (100,300 or 775 μ V)
Signal to Noise Ratio	78dB (A) ref 7.75mV (775 μ V)
Total Harmonic Distortion	<0.05% (0.01%)
Output Specifications	
RCA Output level	775mV (3.3V Max)
Impedance	100 Ohms
AMPBUS Output	2V (8V Max)
Impedance	20 Ohms
Tape Output Level	100, 300, 775mV (10V Max)
Impedance	330 Ohms
Main Power On/Off Switch	Yes
Dimensions (H x W x D)	70 x 321 x 310 mm
Weight	4.42kg
Finish	Black
Remote Control	43keys

Integrated Amplifier

Model Name	Elite INT
General description	Integrated Amplifier
Gain (line inputs)	37dB (max)
Input sensitivity	300mV or 775mV
Tape in	775mV
Output voltage	775mV
Tape out	same as input level
Output impedance	850 Ohms
Tape out impedance	300 Ohms
Inputs	2 x RCA input, TAPE IN
Outputs	1 x Pre-out, TAPE OUT
Rated power output	2 x 80W RMS, 8Ohms
Frequency response	20Hz ~ 20kHz (+/-0.3dB)
Total harmonic distortion (THD)	<0.005% (at 1kHz), <0.05% (20Hz~20kHz)
Signal-to-noise ratio (S/N)	105dB (rated output)
Dimensions (H x W x D)	70 x 321 x 310 mm
Net weight	6.6kg
Power requirements	230V (50 ~ 60Hz), 115V (50 ~ 60Hz), 100V (50 ~ 60Hz)

Power Amplifiers

Model Name	Elite Stereo	Elite Mono
General Description	Stereo Power Amplifier	Mono Power Amplifier
Output Power	2 x 80W RMS, 8Ohms	150W RMS, 8Ohms
Frequency Response	0.2Hz ~ 75kHz (+/-3dB)	0.2Hz ~ 80kHz (+/-3dB)
Total Harmonic Distortion	<0.005% at 70W, 1kHz <0.05% at 70W, 20kHz	<0.005% at 100W, 1kHz <0.05% at 100W, 20kHz
Signal to Noise Ratio	>105dB (20Hz ~ 20kHz) ref 100W	>105dB (20Hz ~ 20kHz) ref 100W
Input Sensitivity (RCA)	775mV (for max output)	775mV (for max output)
Input Impedance (RCA)	33k	33kΩ
AMPBUS Input Sensitivity	2.0V (for max output)	2.0V (for max output)
AMPBUS Input Impedance	10k	10kΩ
Main Power On/Off Switch	Yes	Yes
Dimensions (H x W x D)	70 x 321 x 310 mm	70 x 321 x 310 mm
Weight	6.25 kg	6.5 kg
Finish	Black	Black

Model Name	QSP	QMP
General Description	Stereo Power Amplifier	Mono Power Amplifier
Design Philosophy and Core Technology	Current Dumping	Current Dumping
Output Power	2 x 140W RMS, 8Ohms	260W RMS, 8Ohms
Gain	33dB	33dB
Frequency Response	DC - 29kHz (+/-1dB)	10Hz ~ 50kHz (+/-1dB)
Total Harmonic Distortion	<0.004% at 100W, 1kHz, <0.05% at 70W, 20kHz	<0.005% at 100W, 1kHz, <0.05% at 100W, 20kHz
Signal to Noise Ratio	>108dB (20Hz ~ 20kHz) ref 140W	>105dB (20Hz ~ 20kHz)
Damping Factor	230	-
Input Sensitivity (RCA)	760mV (for max output)	845mV (for max output)
Input Impedance (RCA)	15kΩ	15kΩ
AMPBUS Input	-	AMPBUS / XLR
AMPBUS Input Sensitivity	2.0V (for max output)	2.0V (for max output)
AMPBUS Input Impedance	10kΩ	10kΩ
Main Power On/Off Switch	Yes	Yes
Dimensions (H x W x D)	149 x 328 x 270 mm	184 x 319 x 312 mm
Weight	12.5kg	N/A
Finish	Black	Black



Performance
series

Quad Performance Series Cables

Leading the field of ESL design, having developed the world's first commercially successful electro-static loudspeaker in the 1950s, Quad has been recognised worldwide for manufacturing the finest hi-end loudspeakers. In keeping with its design philosophy of manufacturing high-end system solutions including Valve electronics, Solid state electronics and traditional audiophile loudspeaker systems and cables, Quad has combined British design and engineering with the industry's most efficient manufacturing facilities to create a multitude of products that are incomparable in terms of value and performance. The design technology and quality standards applied to Quad interconnects are the finest available. The level of refinement achievable with these digital and analogue interconnects will surprise you as they will significantly enhance your system's sonic performance, creating the closest approach to real sound.

QUAD

the closest approach to the original sound

MODEL & SPECIFICATIONS

QA-900

Performance Analogue Interconnect

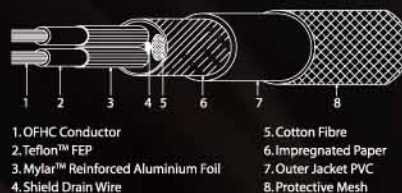
Custom-designed using a twisted pair, symmetrical cable; Terminated with twist-lock RCA connectors with gold-plated outer shield construction for maximum signal integrity; Uses two (2) Oxygen-Free, High Purity Copper (OFHC) conductors reinforced with an aluminium foil wrap

Recommended for all kinds of analogue connections: CD/DVD Players, FM Tuners, Preamplifiers and Power Amplifiers.

Available Lengths:

0.75m, 1.5m, 2.0m, 3.0m

Section Drawing:



Connectors:



QD-900

Performance Digital Interconnect

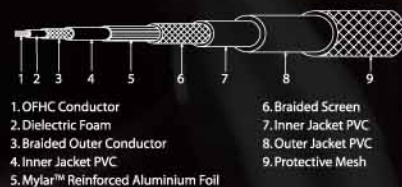
Triple-shielded and terminated with gold-plated twist-lock contacts with RCA connections; Uses Oxygen-Free, High Purity Copper (OFHC) multi-strand centre conductor with uniform charge distribution, close tolerance impedance and strong mechanical protection

Recommended for high speed coaxial digital audio connections: CD / DVD / DAC Digital Output

Available Lengths:

0.75m, 1.5m, 2.5m

Section Drawing:



Connectors:



QL-900

Performance Loudspeaker Cable

Excellent dielectric properties resulting in high bandwidth audio direct from the source; Uses two (2) multi-section wires with an Oxygen-Free, High Purity Copper (OFHC) conductor core and terminated with high precision 4mm gold-plated (OFHC) Twist-lock banana plugs for excellent security and seamless connectivity

Recommended for high fidelity loudspeaker connections: Power Amplifier, Integrated Stereo Amplifier and Multi-Channel Amplification Systems

Available Lengths:

3.0m

Section Drawing:



Connectors:



QX-900

Performance Analogue Interconnect

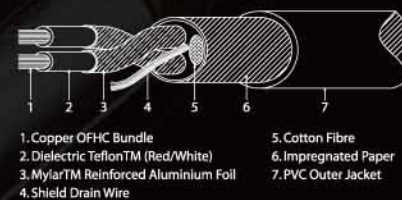
Custom-designed audio cable for balanced transmission using a twisted pair, round section cable; Terminated with XLR type connectors, contacts gold-plated for maximum signal integrity; Uses two (2) Oxygen-Free, High Purity Copper (OFHC) conductors with Teflon Dielectric, reinforced with an aluminium foil wrap for each channel; plus OFHC shield and ground wire. Resistance, Capacitance and Inductance are balanced for minimal effect on signal transmission.

Recommended for symmetrical analogue audio connections: CD/DVD/SACD Players, Phono Stage, Stereo Pre & Power Amplification Systems

Available Lengths:

1.5m, 2.0m, 3.0m

Section Drawing:



Connectors:



QUAD

IAG House, Sovereign Court, Ermine Business Park, Huntingdon, Cambs, PE29 6XU, UK
 Tel: +44(0)1480 447700 Fax: +44(0)1480 431767 <http://www.quad-hifi.co.uk>
 The information in this leaflet is subject to change without notice. All rights reserved © IAG Group Ltd.
 Quad is a member of the International Audio Group. CODE: QH10-LL0005

L-ite² series



QUAD

IAG House, Sovereign Court, Ermine Business Park, Huntingdon, Cambs, PE29 6XU, UK
Tel: +44(0)1480 447700 Fax: +44(0)1480 431767 <http://www.quad-hifi.co.uk>
IAG reserves the right to alter the design and specifications without notice. All rights reserved © IAG Group Ltd.
Quad is a member of the International Audio Group. Code: QH12-BR0002

QUAD

the closest approach to the original sound

The Quad Philosophy

Quad has, since the 1950s, led the field in Hi-Fi Audio development. It is arguably one of the most celebrated brands in the British Hi-Fi Industry. Most people have come to know Quad through the genius of Peter Walker, and his simplistic philosophy of ‘the closest approach to the original sound’, neither adding nor removing anything from the recording - merely reproduce it. British design and engineering coupled with the industry’s most efficient manufacturing facility giving complete vertical integration allows Quad to combine and create products unequalled in terms of value and performance.

The L-ite² Technology

Satellite speakers - The Quad L-ite² satellite and centre channel all use drive units derived directly from the L-series models. The bass cones are made from woven KEVLAR® for strength and speed, mounted on a curved leg cast-alloy chassis and a high tension spider for tight control of movement. The 25mm soft dome tweeter has a high excursion for improved dynamic response, being driven with an in-house designed and manufactured ‘rare-earth’ magnet assembly. To keep composure even under heavy loads, an aluminium voice coil has been used. Because we design and manufacture everything in-house, every element of each drive unit is designed in synergy and manufactured to meet strict quality criteria. This ensures superb reliability and a lifetime of consistent performance.

Centre channel - Whilst tonal continuity across the LCR (i.e. front channels) of a home cinema system is indeed essential, the loading of audio across these channels tends to be un-even, with the centre channel undertaking most of the vocal work. To optimise the design of the Quad L-ite² system, the centre channel is uniquely equipped to handle this frequency range, having an extra bass driver. In most systems, this could lead to horizontal ‘lobbing’ of the soundstage due to phase interference, but because of the close coupling of the drivers in the Quad system, and the nature of the KEVLAR® weave, this is virtually eliminated. The centre speaker has a superbly smooth dispersion characteristic, complete tonal continuity and sufficient dynamic bass ‘attack’ to reproduce the vocal range realistically and with startling clarity.

Subwoofer - The Quad L-ite² subwoofer is itself derived from another ‘best-in-class’: the remarkable Quad L-subwoofer. Identical in every way, except 5/6 the size, and with a 10” rather than 12” driver, the L-ite² subwoofer is compact - yet packs a powerful punch. The microprocessor controls the switching between six discrete analogue bass filter stages, adjustable in 10Hz steps between 35 and 85Hz. Phase and volume can also be adjusted, and up to four groups of settings can be stored in memory and recalled at the press of a button. This is especially useful, allowing the user to have different settings for different types of program material, or between movies and music, or even different settings for night and day time use. Furthermore, all settings can be adjusted from the actual listening position with the fully-featured remote control supplied.

The L-ite² 5.1 System

The L-ite² 5.1 System is the descendents of the famed L2-Series, which as we know were billed into Hi-Fi’s ‘hall of fame’ in 2002 and were, celebrated the world over. Although tiny in proportion to the sound the system is capable of, the Quad L-ite² System offer a sparkling performance exceeding that of most full-size systems. True to Quad’s traditional high class build quality, this distinctively modern system maintains the individually hand-applied seven-layer piano gloss lacquer, and is available in glossy piano black, silver, cherry, birds eye maple and rosewood finish.



Model Name	L-ite ² Satellite	L-ite ² Centre
Transducer Complement	2 Way	2 Way
Cone Bass driver	4" 100mm	2 × 4" 100mm
Soft Dome Tweeter	1" 25mm	1" 25mm
Nominal impedance	6 ohms	6 ohms
Frequency response - 6dB	70Hz - 28kHz	80Hz - 28kHz
Upper frequency limit -10dB	32kHz	32kHz
SPL 1W @ 1m	86dB	87dB
Power Handling		
Continuous Programme	75 Watts	85 Watts
Recommended Amplifier Power	30 - 120W	30 - 150W
Enclosure type bass/mid	ported	ported
System Fb	70Hz	75Hz
Crossover frequencies	2.2kHz	2.5kHz
Construction material	15 & 25mm MDF	15 & 25mm MDF
Dimensions (H x W x D)	225 × 135 × 162 (mm)	135 × 340 × 167 (mm)

L-ite² series



Model Name	L-ite ² Subwoofer
Transducer Complement	Single Tri-Lam Driver
Cone Bass driver	10" 250mm
Amplifier Output Power (RMS)	300 Watts
Line Input sensitivity	250mV for 100W output
Input impedance	10 kW
Frequency response (boundary)	25Hz - 95Hz
Avg. max output @ 1m	108dB
Crossover Range	35 - 85Hz (plus bypass)
Enclosure type	sealed
Construction material	15 & 25mm MDF
Dimensions (H x W x D)	485 × 288 × 430 (mm)

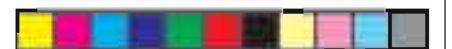
*The right is reserved to alter performance, specification and appearance as required.



L Classic Series
Performance that goes beyond the scale of its dimensions

QUAD

the closest approach to the original sound



L Classic Series

According to Quad's philosophy, high fidelity equipment should add nothing to, nor remove anything from, the recorded sound. All Quad L Classic loudspeakers are designed following that tradition.

Because we manufacture every part of every loudspeaker in our own factory, our designers and engineers have absolute freedom in developing and experimenting with new designs and materials. We can create a product with each part honed to form a perfect symbiotic relationship with every other part. This is why, with Quad products, the whole is always much greater than the sum of the parts.

Quad L Classic loudspeakers employ the format and characteristics of their award-winning forebears, but in formulation and construction this series offers a major advance in performance. Tonally balanced to suit all music genres and virtually unrivalled in the ability to retrieve all nuances captured by recording engineers, L Classic loudspeakers are thoroughly musically involving for the listener and perfectly follow Quad's tradition of *'The Closest Approach To The Original Sound'*.



The L Classic Technology



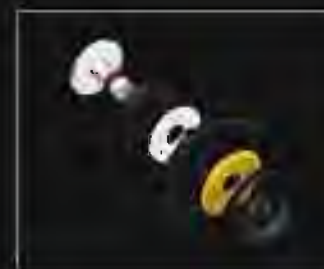
Kevlar Cone Driver

L Classic's long-throw Kevlar driver is manufactured using our proprietary bi-directional Kevlar weave, made from a self-damping resin-impregnated fibre form of the material that is then lattice woven to create the appropriate stiffness, strength and weight, and later formed into a cone and mounted on a butyl rubber surround.



Driver Integration

The L Classic tweeter utilizes a precision-engineered waveguide to integrate the midrange and treble in a totally coherent way. The motor system of the bass-midrange unit has been critically aligned for improved linear motion and low distortion. Acoustically the drive units are combined by an advanced phase-linear crossover utilizing low distortion inductors and high clarity polypropylene capacitors in the signal path. Phase coherency is particularly important to ensure the bass integrates perfectly with the treble, and of course to create a truly holographic stereo image - the hallmark of the classic Quad sound.



Bass-Midrange Driver Technology

A high efficiency, double hand-wound voice coil tracks the signal, with the high-gauss magnet assembly providing momentum for movement. This dual 25mm voice coil of the bass driver is wound on an aluminum alloy carrier or 'bobbin'. This dissipates heat from the central coil region to maintain peak performance and optimum excursion of the long-throw driver. The coils are vented to reduce the effect of any pressure build up in the central cone region. A strong die cast aluminum alloy chassis assembly is an essential part of the design, keeping everything taut and under control, even when encountering large transients and extremes of power.



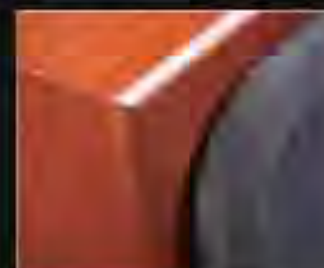
Bi-Wiring

L Classic speakers have two pairs of binding posts for bi-wiring. This involves the use of two pairs of separate cables between the amplifier and the loudspeakers. One connects to the treble unit while the other to the bass-midrange driver. Using separate cables for treble and bass units reduces intermodulation effects while improving headroom and clarity.



Multi-Layer Cabinet Construction

The L Classic range features a multi-layer cabinet construction coupled with additional internal bracing to significantly reduce cabinet coloration and resonance. Special internal long fibre damping is utilized to randomize internal reflections and thus prevent standing waves from forming. The result is that you hear the output of the drive units without interference from the cabinet structure or reflected sound from the internal volume.



Real Wood Veneers and Piano Gloss Finish

L Classic loudspeakers are available in real wood veneer and piano gloss finish options. The real wood veneers are specially chosen and matched for each pair of speakers and then polished to reveal the deep grain pattern and depth of colour. Lustrous piano gloss is applied to each speaker by hand over a period of seven days, each of which involves applying a coat of lacquer which must then dry at an ambient temperature before being cut and polished. The final coat is polished to a high gloss finish to produce one of the finest finishes seen on any loudspeaker in its class.

A Return to Tradition

The Quad 11L Classic follows in the tradition of small, monitor class loudspeakers set by the BBC LS3/5a. This precedent set new standards for accuracy and midband definition when it was first introduced and is still held in high regard by audiophiles worldwide today.

A small monitor loudspeaker has distinct advantages both for near field monitoring and for music reproduction at home. The use of relatively small bass/midrange unit provides the possibility of excellent integration with the treble unit, delivering an accurate power response both on the forward axis and in the room.

As a result this mini-monitor design approach yields an expansive stereo soundstage that belies the size of the speaker itself, and the coherent midband gives lifelike reproduction of vocals and acoustic instruments.

Drive unit integration

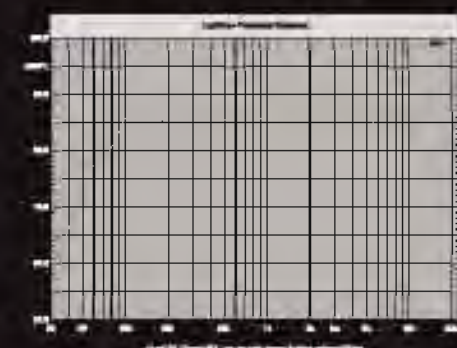
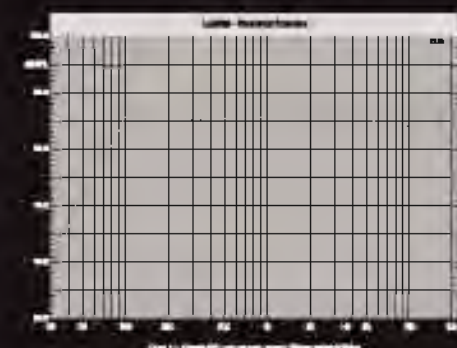
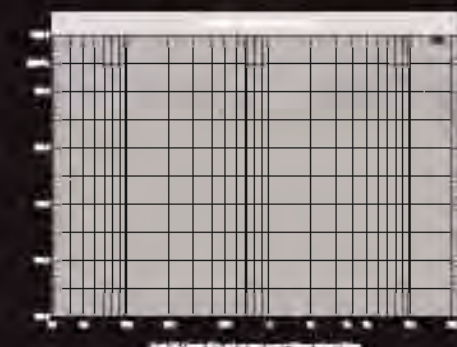
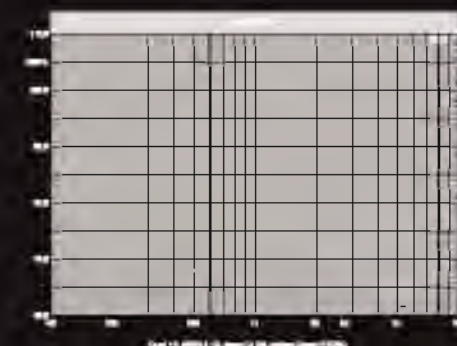


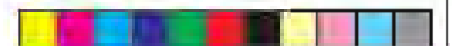
Quad 11L Classic has been fitted with an advanced motor system, coupled to the woven Kevlar bass unit cone, which results in much improved linearity and a substantial reduction in midband and bass distortion levels. As a result the speakers will play loud - no longer is the mini-monitor only suitable for small rooms. But of greater interest is the new profile for the treble dome. This takes the form of a shallow horn waveguide that controls the dispersion of the dome to mimic

that of the midrange cone through the crossover region.

As a result the crossover becomes almost inaudible in the overlap between the driver units, yielding a coherent, detailed and remarkably lifelike midrange performance in a similar way to the coherence heard from electrostatic panels.

A flat frequency response is only one clue to the monitor-like accuracy. On both horizontal and vertical axes the response is maintained within $\pm 3\text{dB}$ giving a clue to the excellent power response heard in-room. Reflections from nearby walls, floor and ceiling, which normally skew the acoustic response heard by the listener and which increase coloration, only add to the overall acoustic power and do not distort the perception of the forward response.





Cabinet construction

The BBC LS3/5a used a novel approach to cabinet construction to reduce the audible effects of panel resonance. Likewise the Quad 11L Classic also utilizes an intriguing method of reducing both panel resonance and the transmission of sound from inside the enclosure.

A combination of two differing wood materials is used for the carcass of the cabinet in order to reduce the audibility of panel resonance and to make the cabinet more opaque to sound. High density chipboard and fibreboard are laminated together in a structure that breaks up the resonant modes into multiple mini-modal frequency bands that lack the strong sonic signature experienced by more coherent panels such as MDF.

Interior sound from the bass drive unit is partially absorbed by specially selected long-hair acoustic absorbent applied to the cabinet walls. In addition the random particle structure of the chipboard provides a long and diffused path for internal sound that tries to escape from the cabinet. The net result is that cabinet coloration is reduced in all its forms leaving the drive units as the primary sound reproducers.

Crossover implementation

The drive units are combined by a sophisticated but electrically simple passive crossover that is integrated for both phase and frequency through several octaves either side of the crossover point.

Audibly the handover of frequencies between the drive units is seamless whilst the maintenance of phase allows a huge soundstage to be created between and around the speakers.

In order to reduce interaction between the physical components of the crossover, each section is placed on its own PCB mounted separately within the speaker cabinet. This also enhances the benefits of bi-wiring by allowing star-grounding back to the amplifier.

Component selection includes precision wound inductors, with the bass coils utilizing laminated silicon-iron cores for linearity, and polypropylene capacitors in the signal path.



Bass Reflex design

To extend the bass to the lowest octave of sound reproduction the Quad 11L Classic is fitted with twin reflex ports that enable a physical crossover to the bass unit at 88Hz. Below this frequency the twin ports provide majority of the output.

The ports are placed on the rear panel to baffle any effects of airflow distortion and midrange leakage. The use of two ports reduces the velocity of the airflow enabling the speakers to be placed close to a rear wall without problems.



Graph 1. 'Waterfall' Graph of Resonance of an MDF Cabinet Side Panel. Note the strong modes at 350Hz and the high frequency transmission through the panel.



Graph 2. 'Waterfall' Graph of Resonance of the Quad L Classic Side Panel. The strong low frequency modes have disappeared and higher frequency transmission is significantly reduced.

QUAD - A New Classic

In the best Quad tradition the L Classic series follows the dictum '*The Closest Approach To The Original Sound*'. Majoring on timbral accuracy, exceptional detail retrieval and low coloration, the L Classic is everything a monitor-class loudspeaker is meant to be, and more.

The more is the through enjoyment of music that the L Classic delivers to the listener. It is not critical of musical styles or recordings but will respond enthusiastically to high quality input and reward the listener with a rendition that lends insight into both the recording and the musical performance.

We are certain that the Quad L Classic series will join the small number of monitor loudspeakers that have become classics in their own right amongst hi-fi enthusiasts the world over.

L Classic Series Specification:



Model	11L Classic	12L Classic
General Description	2-way bookshelf speaker	2-way bookshelf speaker
Enclosure Type	Base reflex	Base reflex
Midrange Driver	125mm woven Kevlar cone	165mm woven Kevlar cone
Treble Driver	25mm fabric dome	25mm fabric dome
Magnetic Shielding	No	No
Crossover Frequency	2.2KHz	2.4KHz
Frequency Response (+/-3dB)	48Hz-22KHz	48Hz-23KHz
Sensitivity (2.83V @ 1m)	87dB	87dB
Nominal Impedance	8 Ohms	8 Ohms
Minimum Impedance	4.2 Ohms	3.8 Ohms
Recommended Amplifier Power	30-150W	50-150W
Dimensions (H x W x D)	310 x 190 x 203mm	340 x 205 x 270mm
Net Weight	6.3 kg each	7.12 kg each
Standard Accessories	rubber feet, user manual, certificate, gloves	rubber feet, user manual, certificate, gloves



Model	23L Classic	25L Classic
General Description	3-way floorstanding speaker	3-way floorstanding speaker
Enclosure Type	Reflex box with auxiliary bass radiator (ABR)	Reflex box with auxiliary bass radiator (ABR)
ABR	185mm	200mm
Bass Driver	—	2 x 165mm woven Kevlar cone
Midrange Driver	125mm woven Kevlar cone	—
Midrange Driver	125mm woven Kevlar cone	2 x 125mm woven Kevlar cone
Treble Driver	25mm fabric dome	25mm fabric dome
Magnetic Shielding	No	No
Sensitivity (2.83V @ 1m)	88 dB	91dB
Recommended Amplifier Power	50-200 W	50-250W
Peak SPL	110dB	110dB
Nominal Impedance	8 Ohms	8 Ohms
Minimum Impedance	4 Ohms	3.5 Ohms
Frequency Response (+/-3dB)	40Hz-23KHz	50Hz-23KHz
Bass Extension (-3dB)	35Hz	30Hz
Crossover Frequency	450Hz, 2.2KHz	430Hz, 2.5KHz
Dimensions (H x W x D)	925 x 225 x 318mm	1125 x 225 x 348mm
Net Weight	17.2 kg	25 kg
Standard Accessories	spikes, pinth, user manual, certificate, gloves	spikes, pinth, user manual, certificate, gloves

Available Finish colours

Veneer

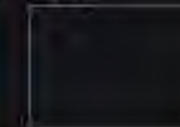
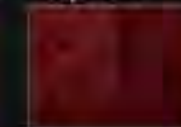
Classique Cherry

Deep Rose

Piano

Classique Cherry

Black



25L Classic

23L Classic



QUAD

IAG House, Sovereign Court, Ermine Business Park, Huntingdon, Cambs, PE29 6XU, UK

Tel: +44(0)1480 447700 Fax: +44(0)1480 431767 <http://www.quad-hifi.co.uk>

IAG reserves the right to alter the design and specifications without notice. All rights reserved © IAG Group Ltd.

Quad is a member of the International Audio Group. CODE: QH11-BR0006