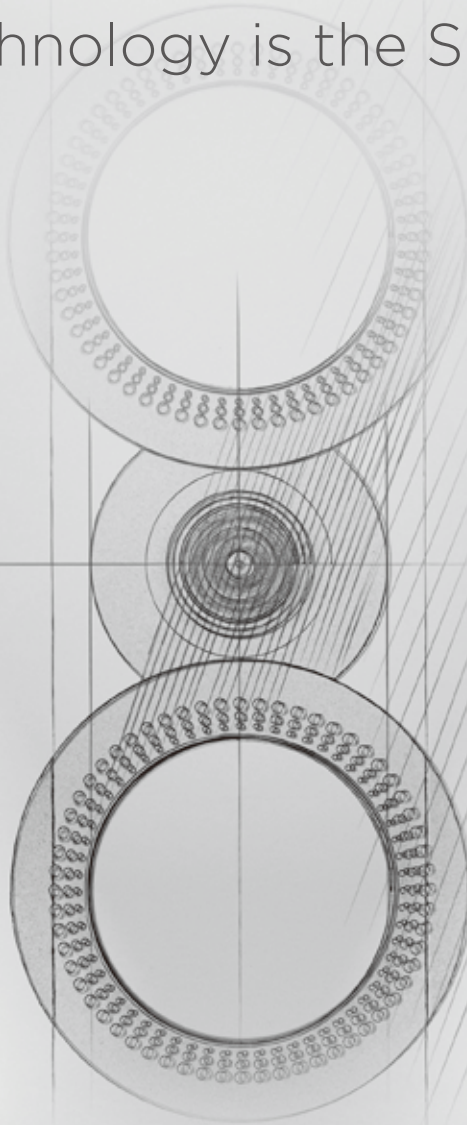


Music is the Master,
Technology is the Slave



mission

mission

In brief...	
Founded in	1977
Founder	Farad Azima
Country of Origin	England
Brand Portfolio	Hi-Fi and Home Cinema Loudspeakers
Price Range	Speakers GBP200/pair to GBP20,000/pair
Philosophy	Innovation and technology in loudspeakers designed for living
Product Range	ZX Series, QX Series, LX Series, MS Subwoofer Series, M-Cube Series





CLARITY - PURITY - EMOTION



Hi-Fi Loudspeaker Range

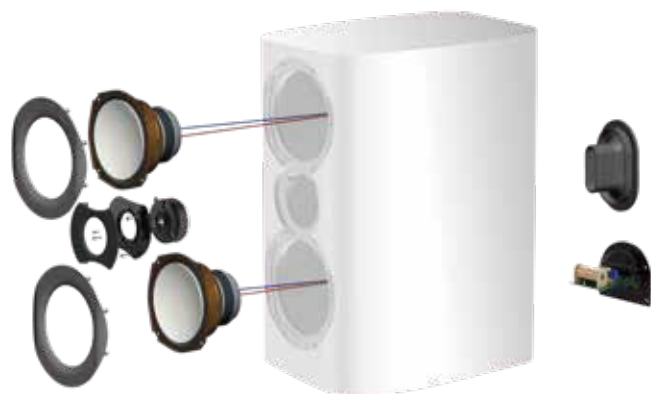
The ZX Series is the latest in a long line of distinguished and revered Mission loudspeakers and joins more recent award winning products. The ZX Series represents the most technologically advanced loudspeakers in the Mission family, with a distinct ID that will complement the finest electronics and décor.

Mission ZX incorporates purpose designed bass driver cones, precision engineered motor systems, advanced treble units and more. As ever with Mission products; 'Music is the Master, Technology is the Slave'. No compromise.



ZX

S E R I E S



New DiaDrive Bass/Midrange Unit

Mission's DiaDrive bass unit has an advanced aluminium matrix cone and is now vented to remove trapped air behind the diaphragm, thus reducing resonance and allowing a clearer midrange performance to beyond 3kHz.

In ZX the driver surround is covered by a vented cover which controls the spurious output from the diaphragm edge, again improving midrange clarity.

Matching 'serrations' are built into the flare of the slot port. High pressure airflow is streamlined from the port exit whilst the asymmetric design breaks up the 'chuffing' distortion normally heard from circular ports.



New Ring Dome Treble Unit

Mission's Ring Dome treble unit overcomes the problems inherent in conventional domes. With this technology the centre of the dome is fixed and voice coil attached part of the way across the dome. The dome is formed into two rings, with the voice coil in the centre so that it can drive the dome more accurately and efficiently.

The result is lower distortion and superior performance, at frequencies up to 30 kHz and beyond. Transient performance is dramatically improved, as is musical detailing, particularly of instrument overtones and harmonics.

New Cabinet / Driver Bracing System

Mission ZX bass/midrange units now feature, as standard, over-size magnet systems to deliver the punch and transient attack that feature in modern recordings.

To improve the mechanical integrity of these magnet systems, special bracing methods have been developed to ensure that the bass diaphragms respond accurately to the musical waveform. Bass output is now thrillingly dynamic with superior detailing and extension.



Inverted Driver
Geometry



Symmetrical Driver
Array



Ribbon Like Slot
Port Design



Ring Dome
Treble Unit









Fine Tuned Crossover Performance

Mission's Inverted Driver Geometry (IDG) of bass/midrange and treble units has been applied to equalise acoustic path lengths. IAG's Head of Acoustic Design, Peter Comeau, has worked tirelessly to ensure a seamless integration between the drive units, so the speaker behaves as one music making system.

ZX Continues to Tell the Story

Designed to stand out head and shoulders above the competition, the Mission ZX range oozes luxury in appealing gloss black and gloss white finishes. Carefully selected trims and driver materials do more than catch the eye and complement the technology at play. The Mission ZX Series has an all-inclusive design that continues to tell the story of the music, not just deliver hi-fi sound.

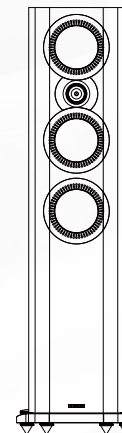
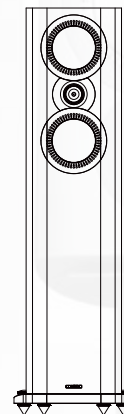
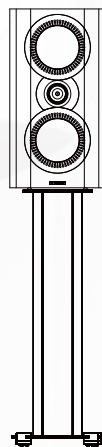
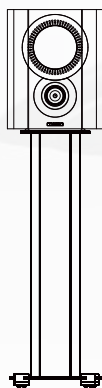
SPECIFICATIONS



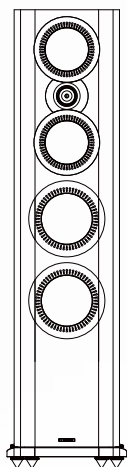
HI-GLOSS White



HI-GLOSS Black



Model	ZX-1	ZX-2	ZX-3	ZX-4
General Description	2-way bookshelf speaker	2-way bookshelf speaker	2-way floorstanding speaker	3-way floorstanding speaker
Enclosure Type	Bass reflex	Bass reflex	Bass reflex	Bass reflex
Transducer Complement	2-way	2-way	2-way	3-way
Bass Driver	5.25" (130 mm) aluminium cone	5.25" (130 mm) aluminium cone x2	5.25" (130 mm) aluminium cone x2	5.25" (130 mm) aluminium cone x2
Midrange Driver				5.25" (130 mm) aluminium cone
Treble Driver	1.5" (38 mm) ring dome	1.5" (38 mm) ring dome	1.5" (38 mm) ring dome	1.5" (38 mm) ring dome
AV Shield	No	No	No	No
Sensitivity (2.0V @ 1m)	88 dB	89 dB	90 dB	90 dB
Recommended Amplifier Power	25-100 W	25-150 W	25-150 W	25-150 W
Peak SPL	108 dB	110 dB	110 dB	110 dB
Nominal Impedance	8 Ω compatible	8 Ω compatible	4 Ω (8 Ω compatible)	4 Ω (8 Ω compatible)
Minimum Impedance	3.5 Ω	3.8 Ω	3.4 Ω	3.4 Ω
Frequency Response(+/-3dB)	52 Hz ~ 24 kHz	45 Hz ~ 24 kHz	42 Hz ~ 24 kHz	40 Hz ~ 24 kHz
Bass Extension(-6dB)	46 Hz	40 Hz	38 Hz	35 Hz
Crossover Frequency	2.6 kHz	2.4 kHz	2.4 kHz	530 Hz, 2.7 kHz
Dimensions (HxWxD)	300 * 240 * (350+12) mm	420 * 240 * (350+12) mm	1025 * 240 * (350+12) mm	1075 * 240 * (350+12) mm
Net Weight	7.6 kg / pcs	9.4 kg / pcs	20.4 kg / pcs	24.6 kg / pcs



ZX-5

3-way floorstanding speaker

Bass reflex

3-way

6.5" (165 mm) aluminium cone x2

5.25" (130 mm) aluminium cone x2

1.5" (38 mm) ring dome

No

91 dB

30-200 W

114 dB

4 Ω (8 Ω compatible)

3.4 Ω

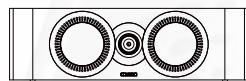
36 Hz - 24 kHz

30 Hz

570 Hz, 2.5 kHz

1155 * 265 * (400+12) mm

31.2 kg / pcs



ZX-C1

2-way centre speaker

Bass reflex

2-way

5.25" (130 mm) aluminium cone x2

1.5" (38 mm) ring dome

No

89 dB

25-150 W

109 dB

8 Ω compatible

4.0 Ω

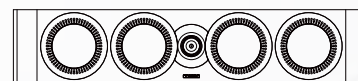
48 Hz - 24 kHz

45 Hz

2.5 kHz

180 * 600 * (300+12) mm

12.6 kg / pcs



ZX-C2

2.5-way centre speaker

Bass reflex

2.5-way

5.25" (130 mm) aluminium cone x4

1.5" (38 mm) ring dome

No

90 dB

25-150 W

110 dB

8 Ω compatible

4.4 Ω

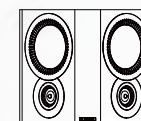
48 Hz - 24 kHz

42 Hz

430 Hz, 2.1 kHz

180 * 880 * (300+12) mm

17.6 kg / pcs



ZX-S

2-way surround speaker

Closed-box system

2-way

5.25" (130 mm) aluminium cone x2

1.5" (38 mm) ring dome x 2

No

88 dB

25-150 W

109 dB

8 Ω compatible

4.3 Ω

120 Hz - 24 kHz

100 Hz

2.7 kHz

285 * 335 * 185 mm

8.6 kg / pcs

WHAT HI-FI?
SOUND AND VISION



Best standmount speaker £350-£500



QX
S E R I E S

OVERVIEW

QX Series

Mission bring its 40 years of audio expertise to this all new speaker range. The QX series has a striking look and impressive performance – offering amazing value for both Hi-Fi and AV setup. Advanced new designs and extensive listening tests have evolved loudspeakers that offer exciting and dramatic performance, no matter what style of music and movies you prefer.

Five core Hi-Fi models – two bookshelf designs and three floorstanding speakers – are joined in this Mission QX Series by a dedicated centre speaker, with a 2-way, wide-distribution surround speakers and an active subwoofer.



HERITAGE

The Mission Hi-Fi Ethos

Loudspeaker design comes from an engineering-led approach to product development, resulting in a striking combination of aesthetics and supreme sound.

Currently, Mission's team of engineering experts is headed by award-winning audio designer, Peter Comeau - whose history with the Mission brand stems from being Mission's Director of Acoustic Design from 1999.



QX

S E R I E S

DESIGN

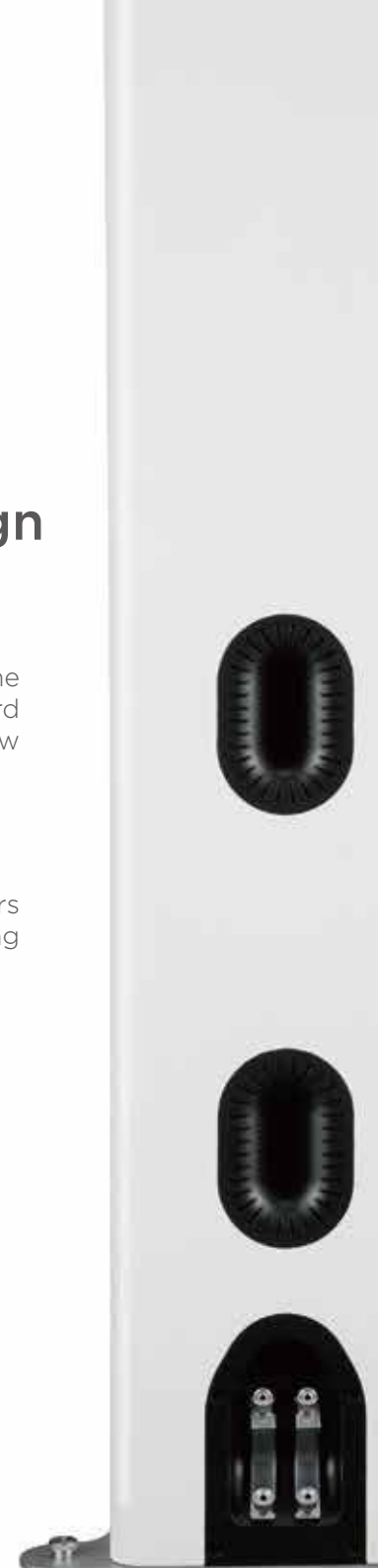
Cabinet & Slot Port Design

Ribbon-like slot port design

The new slot port design features ribs to enhance the airflow and avoid the 'chuffing' which is so often heard from bassreflex ports. The result is enhanced low frequency performance with lower distortion.

Arc shaped cabinet corners

The semi-circular arc shape of the cabinet corners smooths diffraction from the drive units, yielding better power distribution into the room.



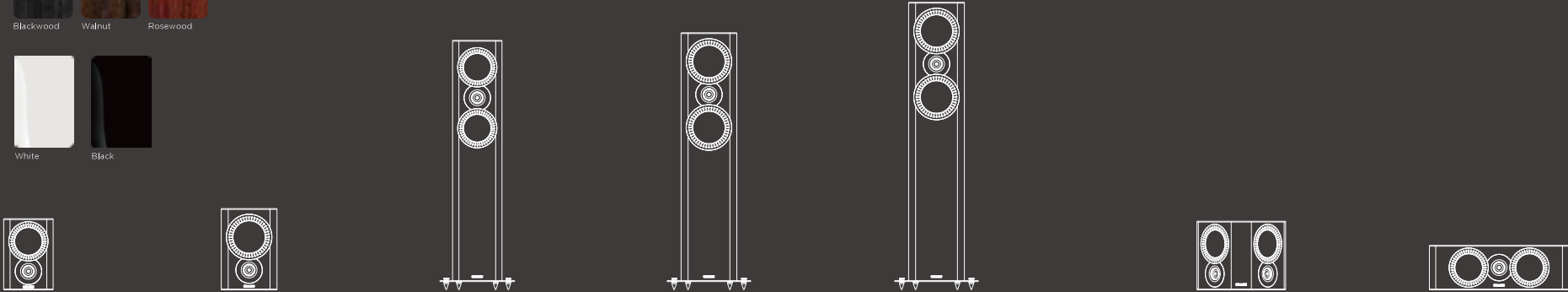
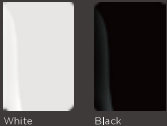
SPECIFICATIONS

VINYL

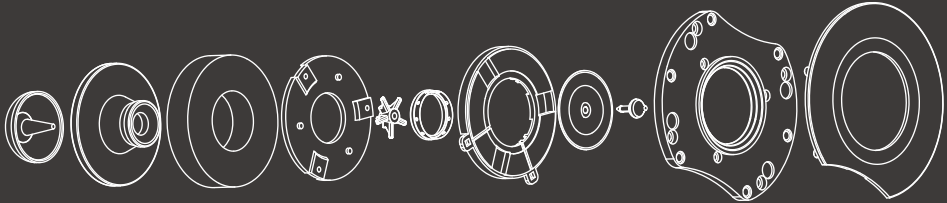
* with aluminium top & bottom plate



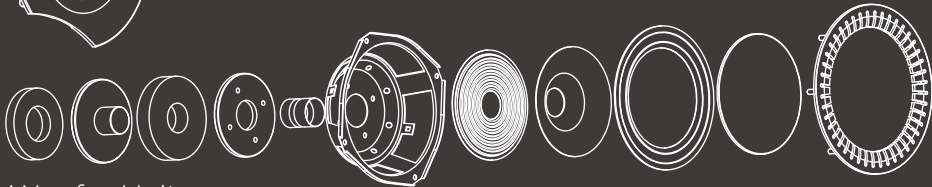
HI-GLOSS



Model	QX-1	QX-2	QX-3	QX-4	QX-5	QX-S	QX-C
General Description	2-way bookshelf speaker	2-way bookshelf speaker	2-way floorstanding speaker	2-way floorstanding speaker	3-way floorstanding speaker	2-way surround speaker	2-way centre speaker
Enclosure Type	Bass reflex	Bass reflex	Bass reflex	Bass reflex	Bass reflex	Closed-box system	Bass reflex
Bass Driver	5" (135 mm) long fiber composite cone	6.5" (165 mm) long fiber composite cone	5" (135 mm) long fiber composite cone x2	6.5" (165 mm) long fiber composite cone x2	12" (300 mm) cone long-throw x1	5" (135 mm) long fiber composite cone x2	5" (135 mm) long fiber composite cone x2
Midrange Driver					6.5" (165 mm) long fiber composite cone x2		
Treble Driver	1.5" (38 mm) textile ring dome	1.5" (38 mm) textile ring dome	1.5" (38 mm) textile ring dome	1.5" (38 mm) textile ring dome	1.5" (38 mm) textile ring dome	1.5" (38 mm) textile ring dome	1.5" (38 mm) textile ring dome
AV Shield	No	No	No	No	No	No	No
Sensitivity (2.0V @ 1m)	87 dB	88 dB	88 dB	88 dB	90 dB	88 dB	88 dB
Recommended Amplifier Power	25-100 W	25-120 W	25-120 W	25-150 W	30-200 W	25-120 W	25-120 W
Peak SPL	95 dB	95 dB	95 dB	95 dB	96 dB	95 dB	95 dB
Nominal Impedance	8 Ω compatible	8 Ω compatible	8 Ω compatible	8 Ω compatible	8 Ω compatible	8 Ω compatible	8 Ω compatible
Minimum Impedance	3.9 Ω	3.6 Ω	3.8 Ω	3.8 Ω	3.5 Ω	3.9 Ω	3.9 Ω
Frequency Response (+/-3dB)	55 Hz - 24 kHz	44 Hz - 24 kHz	42 Hz - 24 kHz	36 Hz - 24 kHz	32 Hz - 24 kHz	110 Hz - 24 kHz	58 Hz - 24 kHz
Bass extension(-6dB)	48 Hz	38 Hz	36 Hz	32 Hz	27 Hz	90 Hz	50 Hz
Crossover Frequency	2.4 kHz	2.2 kHz	2.0 kHz	2.2 kHz	180 Hz, 1.8 kHz	1.8 kHz	1.6 kHz
Dimensions(H×W×D) mm	280 x 195 x (250+10) mm	320 x 220 x (300+10) mm	(950+20) x 195 x (300+10) mm	(980+20) x 220 x (335+10) mm	(1100+20) x 220 x (400+10) mm	270 x 350 x (180+5) mm	175 x 550 x (170+10) mm
Net Weight	6.2 kg / pc	8.5 kg / pc	20.0 kg / pc	23.8 kg / pc	34.0 kg / pc	6.5 kg / pc	8.6 kg / pc



Treble Unit



Woofer Unit



MUSICAL PERFORMANCE

A Truly Musical Performance

What makes a great loudspeaker? What makes it sing? To Mission the answer is simple: in a well matched system, the speakers have to allow the performance of the music to shine through. It's not a group of notes; it's a performance. It's not all about frequency response, impedance, sensitivity and directivity, although they all play a part. To paraphrase a famous expression, it's the music, the whole music and nothing but the music - that, in a nutshell is Mission's philosophy.

For the LX series the speakers' design has been stripped back to its fundamentals and Mission has focused on producing a range of speakers they are proud of in engineering terms, but can be even more proud of in terms of the enjoyment their owners will experience.

LX-2 bookshelf



LX-4 floor-standing



LX-5 floor-standing





Music Is The Master; Technology Is The Slave



MUSICAL PERFORMANCE

LX Series speakers are smart, practical and affordable, sporting a sharp, classic but modern look in keeping with Mission's customary design focus. Above all, they communicate music with engaging energy and detail, bringing performances to life with all the vibrancy and finesse one expects of Mission speakers.

Mission's ethos has always focused upon bringing audiophile performance down to an affordable level, and the LX Series exemplifies this. With the aid of sophisticated modeling tools and software, we've been able to maximise the performance of the series using the most modern technology available. Yet Mission's original slogan, 'Music is the Master, Technology is the Slave', has never been more apt. Ultimately although it's possible to design a loudspeaker that measures badly but still sounds good to most, it tends to be very room dependent and that is not our way. Great sound and good measurements keep us very happy. – Whichever Mission LX speaker you select, you'll want to explore your whole music collection all over again.



MODERN
DESIGN



VIBRANT
SOUND



ADVANCED CAD
MODELLING



MICROFIBRE
TWEETER



LINEAR EXCURSION
WOOFER



PROPRIETARY CONE
MATERIAL



INVERTED DRIVER
TECHNOLOGY



OPTIMISED TIME
ALIGNMENT

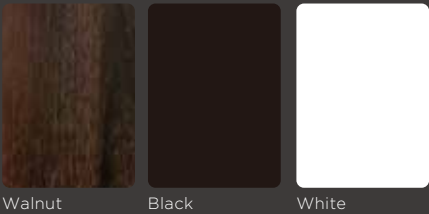


STRENGTHENED
CABINET



NO UNWANTED
RESONANCE

SPECIFICATIONS



Walnut Black White



Model	LX-1	LX-2	LX-2+	LX-3	LX-4
General Description	Bookshelf	Bookshelf	Bookshelf	Floor-standing	Floor-standing
Enclosure Type	Ported	Ported	Ported	Ported	Ported
Transducer Complement	2-way	2-way	2-way	2-way	2-way
Midrange Driver					
Bass Driver	100 mm Advanced Fibre	130 mm Advanced Fibre	165 mm Advanced Fibre	2 X 130 mm Advanced Fibre	2 X 165 mm Advanced Fibre
Treble Driver	25 mm Microfibre Dome	25 mm Microfibre Dome	25 mm Silk Dome	25 mm Microfibre Dome	25 mm Microfibre Dome
Av Magnetically Shielded	No	No	No	No	No
Sensitivity (1w @ 1m)	85 dB	86.5 dB	88 dB	89.5 dB	90 dB
Recommended Amplifier Power	20-80 W	20-100 W	20-120 W	30-120 W	15-150 W
Nominal Impedance	6 Ω compatible	6 Ω compatible	6 Ω compatible	6 Ω compatible	6 Ω compatible
Minimum Impedance	4.1 Ω	4.4 Ω	3.5 Ω	3.6 Ω	3.7 Ω
Frequency Response (+/-3dB)	65-30 kHz	60-30 kHz	45-30 kHz	42-30 kHz	40-30 kHz
Crossover Frequency	2.2 kHz	2.8 kHz	2.0 kHz	2.2 kHz	2.2 kHz
Dimensions (mm)					
Height (on plinth & spikes)	260 mm	305 mm	345 mm	900+20 mm	975+20 mm
Width	160 mm	191 mm	214 mm	191 mm	214 mm
Depth (with grille)	225+10 mm	250+10 mm	300+10 mm	265+10 mm	300+10 mm
Carton Size	445 X 315 X 360 mm	520 X 360 X 420 mm	520 X 360 X 420 mm	400 X 310 X 1025 mm	440 X 340 X 1110 mm
Net Weight	4.3 kg / pc	6.3 kg / pc	8.3 kg / pc	14.8 kg / pc	18 kg / pc
Finish	Black wood / Walnut / White	Black wood / Walnut / White	Black wood / Walnut / White	Black wood / Walnut / White	Black wood / Walnut / White



LX-5

Floor-standing

Ported

3-way

130 mm Advanced Fibre

2 X 165 mm Advanced Fibre

25 mm Microfibre Dome

No

90 dB

15-200 W

6 Ω compatible

3.0 Ω

38-30 kHz

580 Hz / 2.8 kHz

1000+20 mm

214 mm

325+10 mm

460 X 340 X 1140 mm

21 kg / pc

Black wood / Walnut / White

LX-C

Centre Channel

Closed Box

2-way

2 X 100 mm Advanced Fibre

25 mm Microfibre Dome

Yes

87.5 dB

20-100 W

6 Ω compatible

5.0 Ω

80-30 kHz

2.1 kHz

160 mm

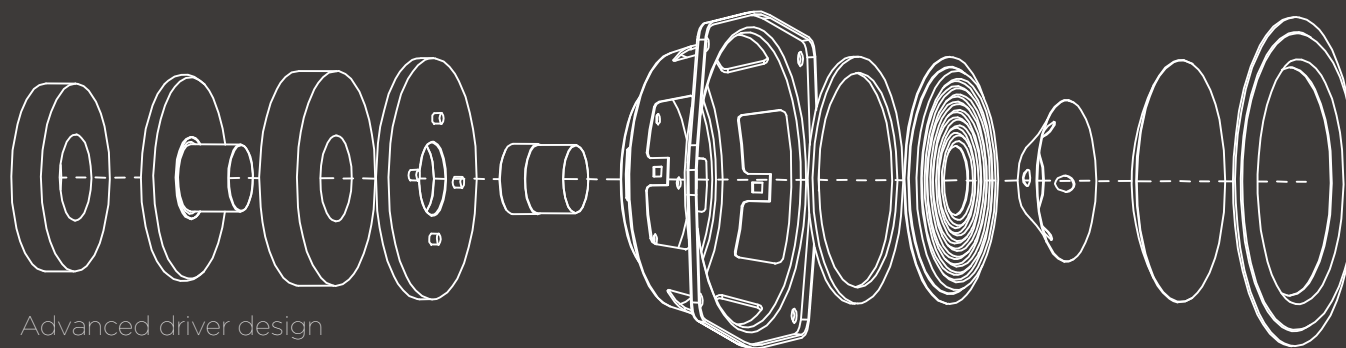
400 mm

200+10 mm

500 X 310 X 280 mm

6.3 kg / pc

Black wood / Walnut / White



Advanced driver design



M-CUBE+SE

M-CUBE+SE 5.1 HOME THEATRE

Continuing the success of the M-CUBE series we, at Mission, bring to you this latest version which is sure to be a favorite. This is the all-new M-CUBE+SE 5.1 home theatre from the innovative M-CUBE range.

The M-CUBE+SE is designed specifically to meet the requirements of the home user who requires a fuss-free solution to Cinema and Surround Sound music in the home. Installation is simple thanks to the small, elegant appearance of the M-CUBE+SE satellite speakers, the multiple mounting arrangements, and the wide dispersion characteristics.

SPECIFICATIONS

ITEM

General Description	Wide bandwidth bookshelf/surround speaker
Transducer Driver	3" full range
Recommended Amplifier Power	85 dB
Nominal Impedance	40-80 W
Minimum Impedance	4 Ohms
Frequency Response (+/-3dB)	3.6 Ohms
Bass Extension(-6dB)	120 Hz-20 KHz
Dimension (h x w x d)mm	100 x 100 x 103 MM (packed in a system, incl. subwoofer and 5pcs satellite speakers)
Net Weight	12 kg (packed in a system, incl. subwoofer and 5pcs satellite speakers)
Finish Color	Graphite black & ivory

M-CUBE+SE SATELLITE



ITEM

General Description	Active closed-box subwoofer system
Transducer Complement	1*8 inch (200mm) long throw bass driver
Input Sensitivity	200 mV for maximum ouput
Amplifier Power Output	70 W
Peak Power Output	150 W
Peak	110 dB
Frequency Response	40 Hz - 150 Hz
Bass Extension (-6dB)	35 Hz
Crossover Frequency	35 Hz - 150 Hz
Signal-to-noise Ratio(S/N)	>85 dB
Special Features	Phase inversion, auto on /off, low pass filter frequency adjustment
Dimension (h x w x d)mm	(298+30) x 268 x 294 MM
Net Weight (Kg)	12 kg (packed in a system, incl. subwoofer and 5pcs satellite speakers)
Finish Color	Graphite black & ivory

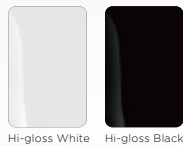
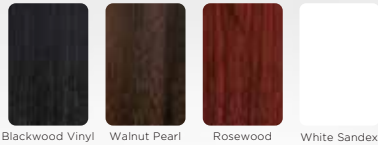
M-CUBE+SE SUBWOOFER





SUBWOOFER SERIES

Active Dynamic Drive IB Subwoofer System



10" Subwoofer
200W Amplifier



12" Subwoofer
300W Amplifier



12" Subwoofer
300W Amplifier



15" Subwoofer
400W Amplifier

	LX-10SUB	QX-12SUB	ZX-12SUB	MS-450SUB
Drive Units	1 x (10") 250 mm PP cone long-throw	1 x (12") 300 mm cone long-throw	1 x (12") 300 mm cone long-throw	1 x (15") 380 mm cone long-throw
Frequency Response	40- 120 Hz 33 dB	35- 120 Hz 33 dB	35- 120 Hz 33 dB	30- 120 Hz 33 dB
Amplifier Power Output	200 W	300 W	300 W	450 W
Peak Power Output	350 W	450 W	450 W	850 W
Line Input Sensitivity	200 mV for maximum output	200mV for maximum output	200mV for maximum output	200 mV for maximum output
Crossover Range	30 - 150 Hz	30 - 150 Hz	30 - 150 Hz	30 - 150 Hz
Inputs	Stereo line in (2 x RCA phono) Mono (LFE) line in (RCA phono)	Stereo line in (2 x RCA phono) Mono (LFE) line in (RCA phono)	Stereo line in (2 x RCA phono) Mono (LFE) line in (RCA phono)	Stereo line in (2 x RCA phono) Mono (LFE) line in (RCA phono)
Input Impedance	Line input 10 kΩ LFE 5 kΩ	Line input 10 kΩ LFE 5 kΩ	Line input 10 kΩ LFE 5 kΩ	Line input 10 kΩ LFE 5 kΩ
Signal-to-noise Ratio (s/n)	≥85 dB	≥85 dB	≥85 dB	≥85 dB
Avg. Max Output @1m	118 dB	118 dB	118 dB	124 dB
Features	Phase inversion, auto on-off	Phase inversion, auto on-off	Phase inversion, auto on-off	Phase inversion, auto on-off
Dimensions	Height: (412+35) mm (with feet) Width: 312 mm Depth: (392+15) mm	Height: (420+58) mm (with feet) Width: 400 mm Depth: (450+15) mm	Height: (420+58) mm (with feet) Width: 400 mm Depth: (450+15) mm	Height: (530+58) mm (with feet) Width: 460 mm Depth: (530+15) mm
Net Weight	16 kg	23 kg	23 kg	33 kg
Finishes Available	Black wood vinyl, walnut, rosewood, white sandex	Black wood vinyl, walnut, rosewood, white sandex	Hi-gloss black, hi-gloss white	Black wood vinyl, walnut, rosewood, white sandex

The Mission logo, featuring the word "mission" in a stylized, lowercase, sans-serif font. The letters are thin and outlined, with a horizontal line running through the middle of the word.

mission

 www.mission.co.uk  missionhifi  missionhifi
IAG House, 13/14 Glebe Road, Huntingdon, Cambridgeshire, PE29 7DL, UK