

Super Slim In-Wall



WSS130



WSS230



WSS430

Custom Install



Super Slim line

The Monitor Audio Super Slim WSS range literally opens up new speaker placement opportunities. Comprising three models, each of the models brings an incredibly slim depth of only 50 mm – two inches in old money. This shallow reach means that, where previously speaker installation was prohibitive, options appear, creating new prospects and fresh design approaches. All three models feature three bass/mid-range drivers plus one tweeter, smartly designed to enable the performance of significantly larger monitor.

Dive in a the shallow end

The WSS line offers a refreshingly simple ‘good, better, best’ menu. The WSS130 is the entry-point, likely to find itself in many general home theatre and music applications. The mid-point WSS230, and offers a step-up in performance – additions here include its maker’s famed C-CAM metal drivers – and comes to the fore in set-ups where even more critical music reproduction is required. The WSS430 flagship maintains its siblings’ shallow depth – all three feature identical footprints – and offers supreme audio performance, drawing on design principles, and materials, from Monitor’s Audio’s high-end Platinum II speakers.

Three in a row

The three-driver layout is key here, helping keep the frontal profile look svelte, bringing also of course the terrific advantage of a depth of a mere 50 mm. Each model features this layout, but uses different specification. The WSS130 entry-point features MMP II cone drivers, augmented by a 25 mm Gold Dome tweeter. This MMP II cone technology allows for a simple crossover design and smooth overall sound character. WSS230 gets Monitor Audio’s renowned C-CAM metal cone drivers, delivering increased precision and detailed sonic characteristics. The flagship WSS430 receives the ‘Platinum II’ treatment and almost every component is unique to this model.

Flying the flagship

The WSS430 range topper employs dished C-CAM cones to ensure ultimate diaphragm rigidity. The main aim here is to reduce distortion. High strength Neo magnets and larger voice coils provide incredible driving force, low magnetic leakage, and slim profile. The magnetic system provides an ‘under-hung’ motor arrangement, ensuring the coil stays in the gap, reducing distortion further and increasing power handling.

Still just 50 mm deep, there is a lot going on with the WSS430. The MPD high frequency transducer technology – also from Monitor Audio’s flagship Platinum II designs – ensures incredibly low distortion, delivering clear high frequency to over 50 kHz. Remove the model’s magnetic front trim and you can rotate the tweeter to provide the optimum dispersion when using the model in landscape orientation.

Restrictions free zone

The Super Slim line makes you think again. The possibility of installation in constructions featuring 2” studs effortlessly slips into view. Mounting restricted by AVC ducts, cabling or pipework? No problem to this in-wall speaker. A further attraction, is the WSS line’s ability to be installed between a standard 14” stud bay, when used in a horizontal (portrait) orientation. This means that the same speakers can be installed around a screen, keeping the same neat visuals, as well as identical L-C-R performance.

Safe and (terrific) sound

To provide protection from damage by residual masonry or building materials, Monitor Audio designed a protective cover to keep the drivers and crossover safe. And the trim-less grille not only provides protection, its also adopts an incredibly discreet and low-profile aesthetic appearance. These covers can be painted to achieve seamless décor integration, with the supplied replacement scrim maintaining the stealthy presence of the speaker once decorating is done. Super strong, magnetically attached rare earth magnets ensure long-term security, coupled with easy installation and servicing.

The WSS range features Monitor Audio’s patented ‘tri-grip’ mounting system meaning you get a robust fixing. This system has been proven over the last decade in the CT and WT ranges – hey, ‘if it ain’t broke’. All three models share the same footprint and pre-construction bracket, providing simplicity as well as the option of specifying a higher performance model in the range before completion.

WSS130



WSS230



WSS430



WSS430



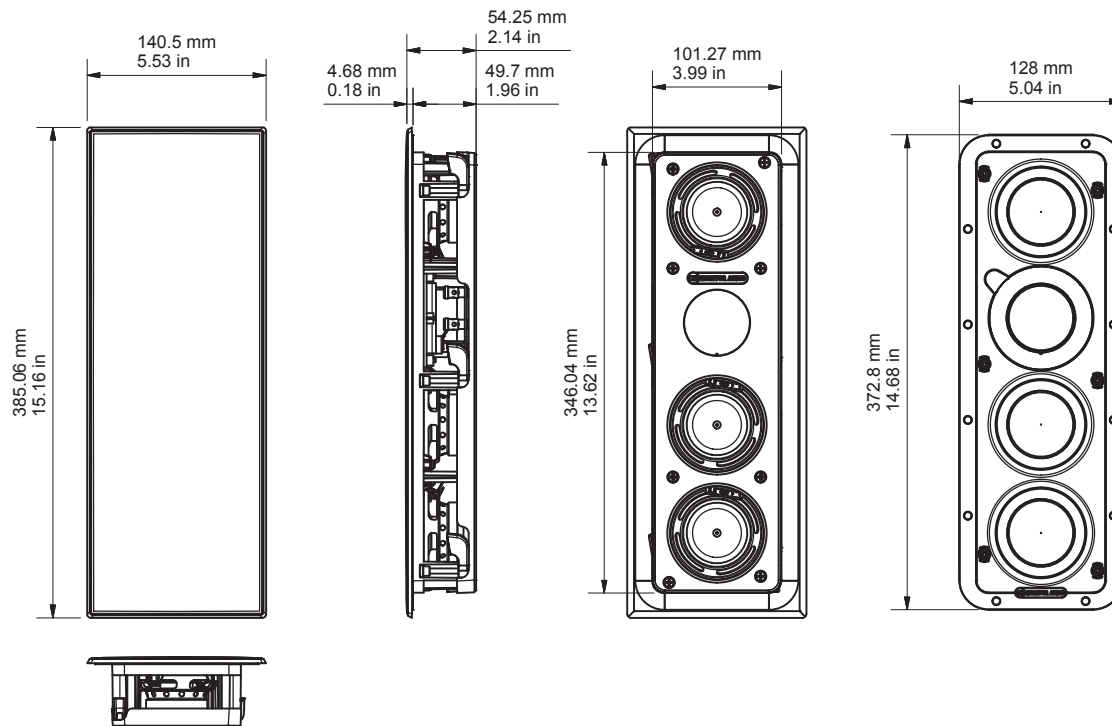
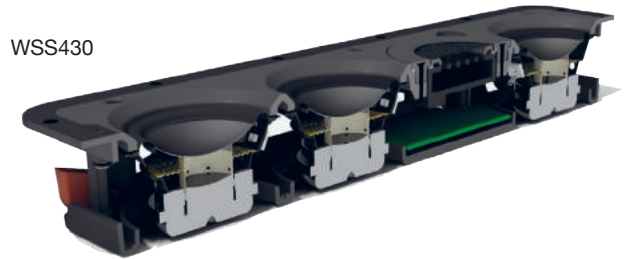
Key Features

- Good, better, best performance levels
- Super Slim depth 50 mm (2") – designed to fit in 2" stud walls or where space is restricted
- Designed for portrait or landscape installation – fits between standard 14" stud bays
- Elegant, slim profile only 385 x 140 mm wide
- Three, 3" bass/mid-range drivers featuring incremental technology and performance benefits – MMP II, C-CAM and dished C-CAM cones
- 25 mm C-CAM Gold Dome tweeter used on WSS130 and WSS230 models.
WSS430 utilises MPD high frequency transducer from Platinum II IC model and flagship Platinum II box speaker range
- High quality crossover components – selected and voiced for amazing sonic performance
- Magnetically attached 'trim-less' grille – discreet, reliable, and easy servicing
- Patented Tri-Grip Dog leg fixings – reliable, robust, and quick to install
- Gold plated sprung push terminals – easy to connect and reliable
- Paintable grille – to complement and blend with décor
- WSS430 has rotating tweeter for optimum dispersion when used in landscape configuration
- WB3 (dark blue) pre-construction bracket – available at launch

WSS130



WSS430



Specifications

Model	WSS130	WSS230	WSS430
Frequency Response (-6dB)	75 Hz – 30 KHz	75 Hz – 30 KHz	70 Hz – 50 KHz
Sensitivity (1W@1m)	87dB	87dB	87dB
Impedance (nominal)	8 ohms	8 ohms	8 ohms
Maximum S.P.L	105.6 dBA	105.6 dBA	106.5 dBA
Power Handling	60 W – Full range (100 W with crossover set to 100 Hz @ 12 dB/Octave)	60 W Full range (100 W with crossover set to 100 Hz @ 12 dB/Octave)	75 W Full range (120 W with crossover set to 100 Hz @ 12 dB/Octave)
Amplifier Requirements	10 – 100 W	10 – 100 W	10 – 120 W
Driver Complement	3 x 3" MMP II cone bass-mid drivers 1 x 25 mm (1") C-CAM Gold Dome tweeter	3 x 3" C-CAM cone bass-mid drivers 1 x 25 mm (1") C-CAM Gold Dome tweeter	3 x 3" dished C-CAM cone bass-mid drivers 1 x MPD High frequency transducer – rotatable for portrait or landscape application
Crossover recommendation – using AVR/processor	100 Hz at a minimum of 12 dB/Octave (24 dB/Octave optimum)	100 Hz at a minimum of 12 dB/Octave (24 dB/Octave optimum)	100 Hz at a minimum of 12 dB/Octave (24 dB/Octave optimum)
Overall dimensions (H x W)	385 x 140.5 mm (15" x 5.5")	385 x 140.5 mm (15" x 5.5")	385 x 140.5 mm (15" x 5.5")
Overall Depth (inc grille)	54.25 mm (2")	54.25 mm (2")	54.25 mm (2")
Cut Out dimensions (H x W)	346 x 101 mm (13.5" x 4")	346 x 101 mm (13.5" x 4")	346 x 101 mm (13.5" x 4")
Mounting Depth	50 mm (2")	50 mm (2")	50 mm (2")
Connection	Gold Plated Sprung push terminals – For bare wire connection up to 4 mm ²	Gold Plated Sprung push terminals – For bare wire connection up to 4 mm ²	Gold Plated Sprung push terminals – For bare wire connection up to 4 mm ²
Fixing Type	6 position Tri-Grip dog leg fixings	6 position Tri-Grip dog leg fixings	6 position Tri-Grip dog leg fixings
Pre-Construction Bracket	WB3 – Dark Blue	WB3 – Dark Blue	WB3 – Dark Blue
Weight	1.4 kg	1.4 kg	1.1 kg
Construction Material	Mineral filled ABS Plastic, RoHS2 Compliant. Painted steel grille	Mineral filled ABS Plastic, RoHS2 Compliant. Painted steel grille	Mineral filled ABS Plastic, RoHS2 Compliant. Painted steel grille

Monitor Audio Ltd
 24 Brook Road,
 Rayleigh, Essex,
 SS6 7XJ England
 T. + 44 (0)1268 740580
 F. + 44 (0)1268 740589
 E. info@monitoraudio.co.uk