

WARRANTY

Your Acoustic Energy Aego³ system is guaranteed against defects in materials, manufacture and workmanship for two years from the date of purchase. Please retain all original packaging materials for possible future use.

Under this warranty Acoustic Energy agrees to repair any defect or, at the company's discretion, replace the faulty component(s) without charge for parts and labour. This warranty does not imply any acceptance by Acoustic Energy or its agents for consequential loss or damage and specifically excludes fair wear and tear, accident, misuse or unauthorised modification.

This warranty is applicable in the United Kingdom only and does not in any way limit the customer's legal rights. Claims and enquiries under the warranty for AE products purchased outside the UK should be addressed to the local importers or distributors.

If you have any reason to claim under the warranty please contact your dealer or point of purchase in the first instance.

WARNING

To reduce the chance of electric shock, do not expose this system to rain or moisture

To reduce the risk of shock, do not remove the rear panel of this system - there are no user-serviceable parts inside. Refer servicing to qualified service personnel.



The lightning flash with arrowhead symbol in an equilateral triangle is intended to alert the user to the presence of uninsulated "dangerous voltage" within the system enclosure that may be of sufficient magnitude to constitute a risk of electrical shock.



The exclamation point within an equilateral triangle as marked on the system is intended to alert the user to the presence of important operating and maintenance instructions in this owners guide.

Designed by Acoustic Energy Ltd (UK), manufactured in Malaysia.



AEGO³

AEGO
S O U N D B A R



Specification

Inputs:	1 x Stereo Mini-jack 1 x Optical (digital) 1 x Bluetooth (wireless)	Controls:	Full remote control operation
Outputs:	2 x RCA Phono (speaker level)	Power Ratings:	110-240V @ 50/60Hz; 65VA
Accessories:	2 x 3m Speaker cables (RCA) 1 x 2m Stereo Mini-jack to Mini-jack (3.5mm) lead 1 x 2m Optical digital lead 1 x Remote Control 1 x 1.8m Two-pin power cord with regional mains plug.	Dimensions (HWD):	Subwoofer - 350x195x307mm Satellites - 105x75x85mm Soundbar - 70x500x70mm
		Weight:	9kg
		Finish:	Black textured subwoofer Aluminium, black rubber and black grille Satellites or Soundbar.



Acoustic Energy Ltd.
16 Bridge Road, Cirencester,
Gloucestershire, GL7 1NJ
England.

Tel: +44 (0) 1285 654432
Fax: +44 (0) 1285 654430
Support: +44 (0) 1285 656890
E-mail: info@acoustic-energy.co.uk



Owners Manual

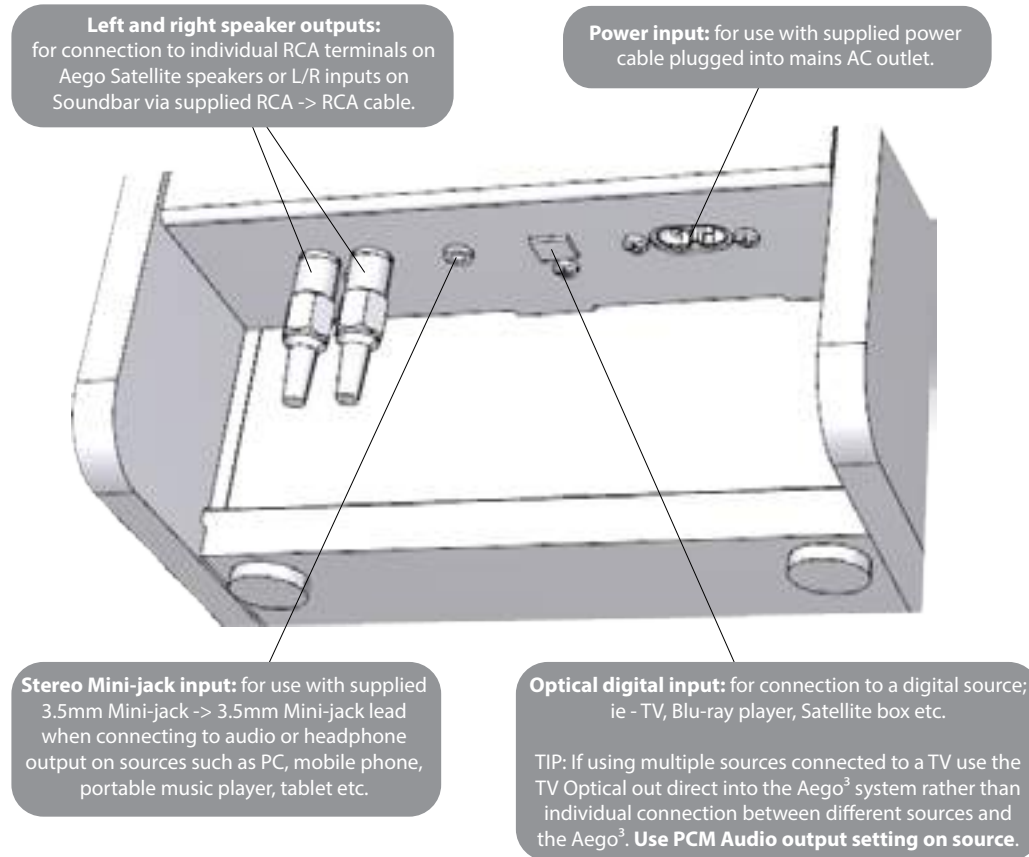
SET-UP GUIDE

Thank you for choosing the Acoustic Energy Aego³ music system, please take a moment to read through this quick set-up guide to ensure correct operation and to get the best performance from your system.

Whether you've chosen the Sub/Sat or Sub/Soundbar variation of the system, the basic operation remains the same and performance will be very similar between the two models.

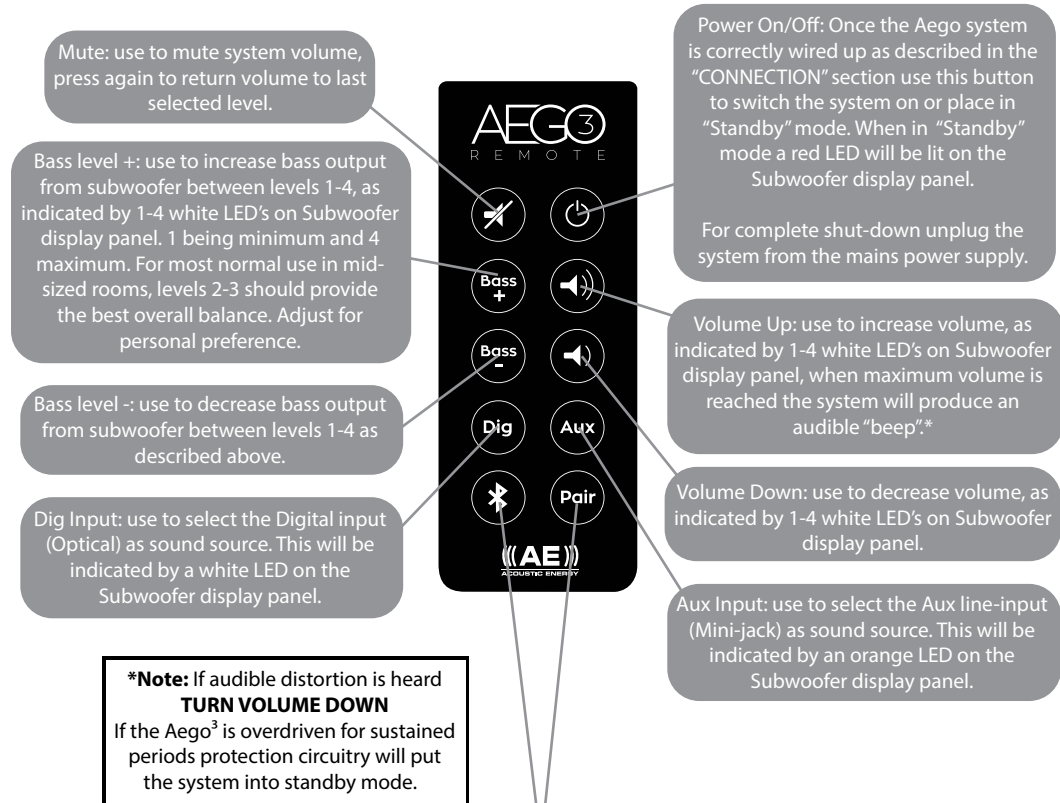
CONNECTION

All physical connections on the Aego³ system are made via the downward-firing panel at the rear of the subwoofer. This placement ensures tidy cabling and allows for placement close to walls if necessary.



OPERATION

All operation of the Aego³ system is performed via the supplied remote control, there are no physical controls on the system itself. A brief description of controls is outlined below.



Bluetooth®

When selecting the Bluetooth® "Bluetooth" input (indicated by a blue LED on the Subwoofer display panel) for the first time, the system will go into "pairing" mode and be visible to Bluetooth®-enabled devices for connection as "AEGO3". Once paired with the Aego³ the Bluetooth® source device will play audio wirelessly through the system and operate overall volume level if the function is available.

Whenever the Bluetooth input is selected in future it will attempt to pair with previously connected devices and become visible to new devices if no previous connections are available. Pairing mode can also be manually selected by pressing the "Pair" button; when the system is in pairing mode the blue LED on the Subwoofer display panel will flash, when connection is made the blue LED will remain lit and an audible "beep" will be heard. The most recently connected device always takes preference when attempting to play audio.*

*For instructions on source device's Bluetooth® operation please refer to that device's manual or manufacturer.