

2M Moving Magnet Cartridges



ortofon
accuracy in sound

2M Moving Magnet Cartridges



Advancements in Sound

The 2M Series features Ortofon's trademark split pole pins, an invention which enables moving magnet cartridges to have a flat frequency response as with a moving coil cartridge. Split pole pins were invented by Ortofon, and were originally presented in the 500 and Ortofon OM Series.

The 2M 78, 2M Mono, 2M Red and 2M Blue use an improved engine, which provides an optimized sound reproduction and a high level of sonic accuracy.

The cartridge body used for the 2M Bronze and 2M Black is manufactured from Lexan DMX Piano Black, a revolutionary material which ensures high rigidity while eliminating unwanted resonances. The 2M Bronze and 2M Black use a special upgraded engine, featuring split pole pins with a silver plated copper wire.

Ease of use

The weight and size of 2M Series have been optimized to fit the most common turntables on the market today. The cartridge body has also been streamlined to provide easy mounting and alignment. The name "2M" was chosen as it represents the abbreviation for moving magnet, MM. Moving magnet cartridges provide excellent compatibility in an assortment of playback systems and with a wide variety of phono preamps.

Stylus types

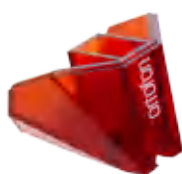
All of the 2M cartridges feature diamonds which are polished to the highest standards of the industry. The 2M Red features a tipped Elliptical diamond, while the 2M Blue features a Nude Elliptical diamond.



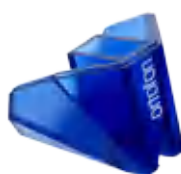
2M 78 / Verso



2M Mono / Verso



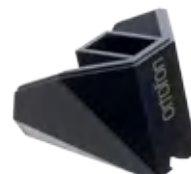
2M Red / Verso



2M Blue / Verso



2M Bronze / Verso



2M Black / Verso



The 2M Series

Ortofon's highly popular 2M series has been expanded with new models: the brand new, true-mono 2M 78 for playback of 78 rpm records, as well as the new 2M Mono for use with mono microgroove recordings.

In addition to the range of acclaimed 2M top-mount models, we are proud to present the new 2M Verso configuration for bottom mounting. Every 2M model is now also available in "Verso" configuration to allow easy mounting on tonearms which do not allow the screws to pass through the top of the headshell.

The 2M Series was developed in conjunction with the Danish designer Moeller Jensen Design. Inspired by the facets of a diamond, whose contours gracefully trace the grooves on a record's surface, the 2M's handsome elegance establishes a great combination of form and functionality.

Of course the 2M isn't just another pretty face. It has been engineered to the highest standards and is congruent with Ortofon's unrelenting commitment to providing the most precise and accurate reproduction possible without coloration.

The 2M Bronze features a Nude Fine Line diamond stylus, which is particularly suited for demanding applications. The slim profile of the Fine Line stylus will track even the highest frequency information, making it a must for discerning listeners. Additionally, its larger footprint ensures reduced distortion and record wear.

The 2M Black is the moving magnet flagship from Ortofon. The 2M Black is graced with a Nude Shibata diamond stylus – the same diamond as on the acclaimed MC Cadenza Black. Its slim, highly polished profile allows an exceedingly wide contact area to the groove walls and ensures notably detailed reproduction throughout the spectrum, including even the most high frequency groove information. Users of the 2M Black will enjoy the benefit of impeccable sound quality, along with reduced record & stylus wear and reduced distortion and phase error as a result of the diamond's improved tracking geometry.

The 2M 78 features a 65 µm Spherical stylus that is perfect for playback of 78 rpm records, which require a larger stylus profile for proper playback.

The 2M Mono Features a 18 µm Nude Spherical stylus that is an optimal solution for playing mono microgroove vinyl records. Both 2M Mono and 2M 78 feature an optimized engine for superior sound quality and use a strapped output to deliver the same output signal from both sets of pole pins. This effectively eliminates the need for mono-specific equipment, making it easily possible to enjoy true mono reproduction on any stereo playback system.

2M Series styli are engineered for a tight fit to minimize coupled vibrations, thereby improving sound reproduction. The 2M Red/Verso and 2M Blue/Verso have interchangeable styli units, and so have 2M Bronze/Verso and 2M Black/Verso.



2M Moving Magnet Cartridges



TECHNICAL DATA	2M 78 / Verso	2M Mono / Verso	2M Red / Verso	2M Blue / Verso	2M Bronze / Verso	2M Black / Verso
Output voltage at 1 kHz, 5cm/sec.	4 mV	4 mV	5,5 mV	5,5 mV	5 mV	5 mV
Channel balance at 1 kHz	-	-	1.5 dB	1.5 dB	1 dB	1 dB
Channel separation at 1 kHz	-	-	22 dB	25 dB	26 dB	26 dB
Channel separation at 15 kHz	-	-	15 dB	15 dB	15 dB	15 dB
Frequency range at -3 dB	20-20.000 Hz	20-22.000 Hz	20-22.000 Hz	20-25.000 Hz	20-29.000 Hz	20-31.000 Hz
Frequency response	20-20.000Hz +3/-1db	20-20.000Hz +3/-1db	20-20.000Hz +3/-1 db	20-20.000Hz +2/-1db	20-20.000Hz +2/-0db	20-20.000Hz +2/-0db
Tracking ability at 315 Hz at recommended tracking force	70 µm	70 µm	70 µm	80 µm	80 µm	80 µm
Compliance, dynamic, lateral	18 µm/mN	18 µm/mN	20 µm/mN	20 µm/mN	22 µm/mN	22 µm/mN
Stylus type	Spherical	Nude Spherical	Elliptical	Nude Elliptical	Nude Fine Line	Nude Shibata
Stylus tip radius	R 65 µm	R 18 µm	r/R 8/18 µm	r/R 8/18 µm	r/R 8/40 µm	r/R 6/50 µm
Tracking force range	1.6-2.0g(16-20 mN)	1.6-2.0g(16-20 mN)	1.6-2.0g(16-20 mN)	1.6-2.0g(16-20 mN)	1.4-1.7g(14-17 mN)	1.4-1.7g(14-17 mN)
Tracking force, recommended	1,8 g (18 mN)	1,8 g (18 mN)	1,8 g(18 mN)	1,8 g(18 mN)	1,5 g (15 mN)	1,5 g (15 mN)
Tracking angle	20°	20°	20°	20°	20°	20°
Internal Impedance, DC resistance	7 kOhm	7 kOhm	1,3 kOhm	1,3 kOhm	1,2 kOhm	1,2 kOhm
Internal inductance	300 mH	350 mH	700 mH	700 mH	630 mH	630 mH
Recommended load resistance	47 kOhm	47 kOhm	47 kOhm	47 kOhm	47 kOhm	47 kOhm
Recommended load capacitance	150-300 pF	150-300 pF	150-300 pF	150-300 pF	150-300 pF	150-300 pF
Cartridge colour, body/stylus	Black/Grey	Black/White	Black/Red	Black/Blue	Black/Bronze	Black/Black
Cartridge weight without screws	7,2 g	7,2 g	7,2 g	7,2 g	7,2 g	7,2 g
Replacement stylus unit	2M 78	2M Mono	2M Red	2M Blue	2M Bronze	2M Black