

# CPC120



## Ultra-discreet audio

**At only 80mm (3 1/8 inches) diameter, Monitor Audio's CPC120 is a loudspeaker that offers extraordinary sound quality for a truly innovative application. Its precision-engineered micro-design allows it to offer a surprisingly coherent and detailed performance from a standard halogen down-lighter hole.**

The secret to the design's success is that in spite of its size, and unlike many other in-ceiling speakers, it provides a dedicated rigid and mineral-filled enclosure for the driver, giving improved quality and consistency to midrange and bass frequencies wherever the CPC120 is installed.

Although miniaturised, the CPC120's driver utilises technologies found across Monitor Audio's more conventional up-market speakers, allowing the CPC120 to blend sonically with Monitor Audio systems of floor, stand, in-ceiling and in-wall speakers for a perfectly-optimised sound anywhere in the home.

Available in brushed steel, white, chrome and brass, the miraculous CPC120 ceiling speaker will also integrate seamlessly with any décor, providing great sound and a liberating wire-free look simultaneously. By utilising conventional fitment clips, installation couldn't be quicker or simpler.

## Features and Benefits

- Quick and easy discreet flush-fitment to walls or ceilings.
- CP (Controlled Performance) rear enclosures for improved sonic consistency regardless of interior wall or ceiling construction.
- The CPC120 can be specified with four different grille bezel options.
  - \* Brushed Steel
  - \* White
  - \* Chrome
  - \* Brass
- Conventional fitment clips offer quick and simple installation.

## Applications

- In any room where discreet superior audio quality is required.

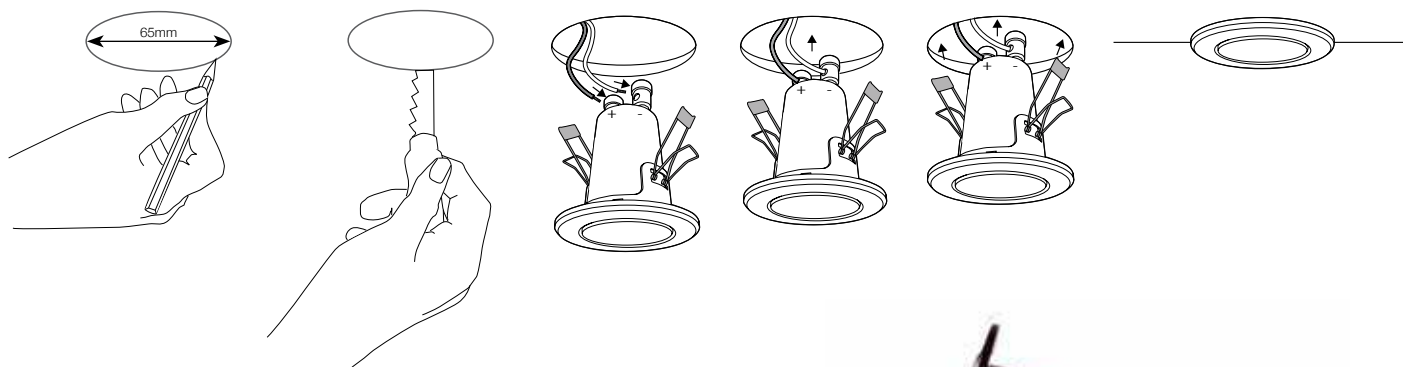


[monitoraudio.co.uk](http://monitoraudio.co.uk)

# CPC120

## Installation guide

Follow these quick and easy steps for installation:



## Specifications

Model	CPC-120
Frequency Response	100Hz – 20kHz
Impedance (nominal)	8 ohms
Sensitivity (1W@1m)	85dB
Maximum SPL (single unit in free space)	101.9dB
Recommended Crossover Frequency	200Hz
Power Handling (RMS)	20W 50W (using crossover)
Recommended Amp Requirements	5-20W 5-50W (using crossover)
Drive Unit Complement	1 x 2" Full range micro-driver
Overall Diameter	80 mm (3 1/8")
Overall Depth	96 mm (3 3/4")
Cut-out Hole Diameter	65 mm (2 1/2")
Mounting Depth	91.5 mm (3 5/8")
Fixing Type	2 x Spring clip fixing
Cable Connection	Gold plated 'push' type terminals
Construction Materials	Steel bezel / aluminium enclosure
Weight kg (lbs)	0.19 Kg (0.42 lb)



Monitor Audio Ltd  
24 Brook Road  
Rayleigh  
Essex  
SS6 7XJ

T: +44 (0)1268 740 580  
F: +44 (0)1268 740 589  
E: info@monitoraudio.co.uk

[monitoraudio.co.uk](http://monitoraudio.co.uk)