

**KEF**  
INNOVATORS IN SOUND



Q SERIES



KEF has been a legendary name in high end loudspeakers ever since it was founded in the UK by Raymond Cooke half a century ago.

# an unrivalled pedigree

Innovation was what made KEF different right from the start – and it still is. By pioneering the use of advanced new materials, space age technologies and computer analytics, KEF products have earned the respect

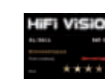
of audiophiles all over the world. No other brand can claim so many design breakthroughs in pursuit of the most accurate and natural-sounding acoustic reproduction.

The multiple award-winning Q Series is based on KEF's signature technology, the Uni-Q<sup>®</sup> driver array. Over twenty-five years of continuous refinement, the listening benefits of this unique configuration are greater than ever before: effortless dynamics and a sweet, compellingly realistic three-dimensional sound image dispersed evenly throughout the room.

## a class above

The Uni-Q driver array derives from KEF's revolutionary Blade, with a larger high efficiency vented tweeter mounted at the acoustic centre of an advanced LF/MF driver. Larger cabinets make the most of the gutsy, tightly defined bass response and minimalist

crossovers assure seamless transitions. What you hear is more eloquent and emotive than ever. Rock or baroque, tango or techno, everyone in the room enjoys the same startling clarity as the original performance.



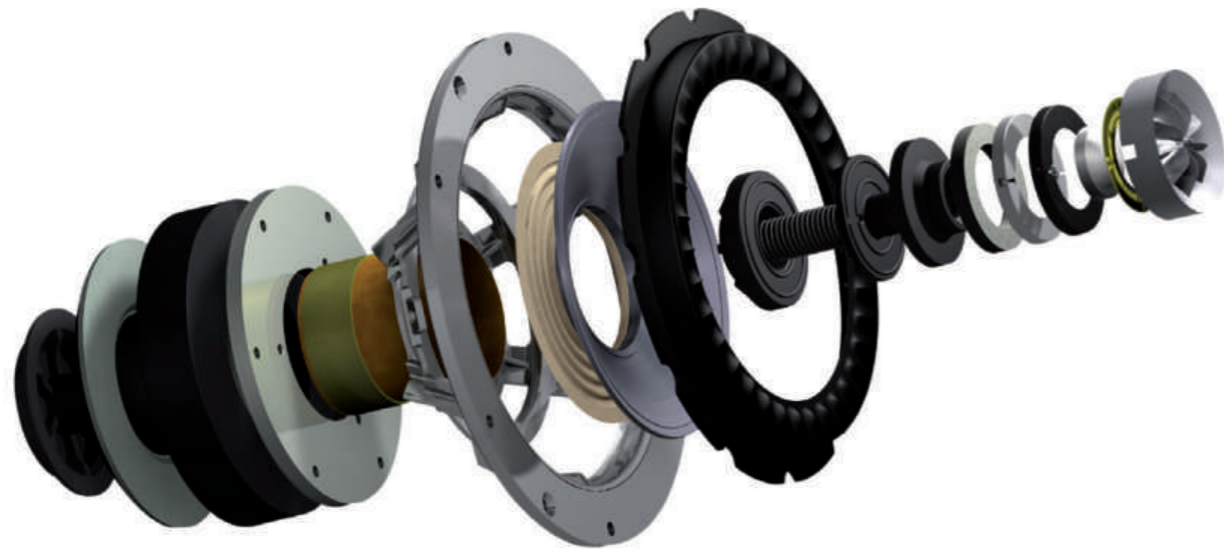




Innovative design engineering creates a pure, richly detailed sonic image.

# technology with soul

Combining this groundbreaking Uni-Q driver array with KEF's meticulous 'total design' approach, the Q Series immerses you in an engaging, intricately detailed 3D soundscape.



## Uni-Q® driver array

Fluent, spacious and true, wherever you sit.

Thanks to the latest computer modelling techniques and years of development, the Uni-Q driver array is based on state-of-the-art Blade technology, with a more sensitive vented 1 1/2" dome tweeter for distortion-free power handling and imperceptible transitions to midrange frequencies. The dome is cleverly braced, pushing the first breakup beyond audibility, so what you hear is

flawlessly accurate. KEF's 'tangerine' waveguide over the dome maximises Uni-Q's exceptionally wide dispersion characteristics.

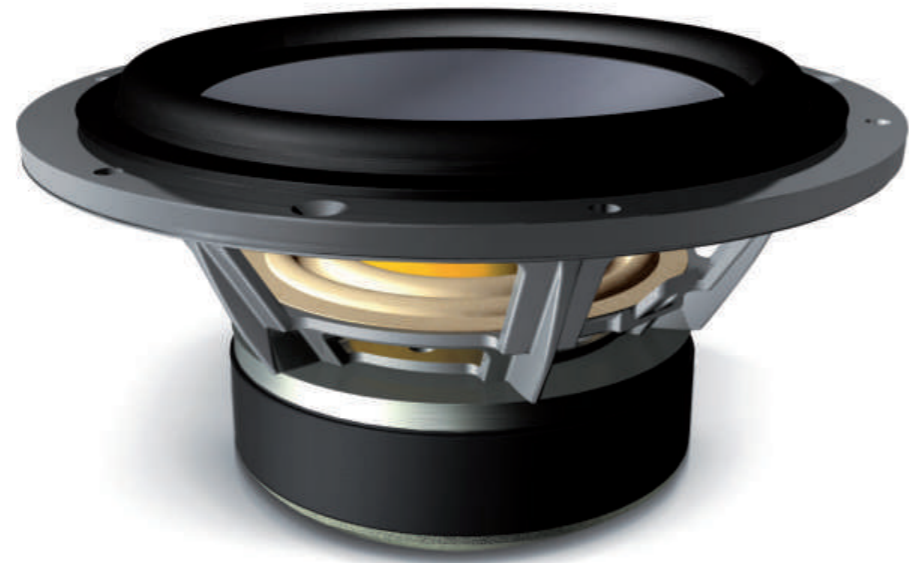
The superlight aluminium cone LF/MF drive unit delivers faster, cleaner bass response, and KEF's unique Z-flex surround allows the extreme excursions needed for true bass 'thump' while maintaining a seamlessly

smooth surface to disperse upper frequencies from the tweeter.

Vocals suddenly seem more open and natural. You start hearing subtle nuances you never noticed before. And best of all, you don't have to be in a little 'sweet spot' to experience it. With Uni-Q, you can sit where you want and not miss a thing. All you hear is what the artist intended.







## Advanced bass technologies

Deeper, tighter and more accurate bass.

With the same rigid aluminium cone as the Uni-Q, the driver minimises unwanted resonance by mounting the vented magnet assembly on a rigid die-cast chassis, and the 50mm voice coil ensures superb power handling.

The cabinets are heavily braced to eliminate internal standing waves, and on the floorstanders, LF response is enhanced by dedicated front-firing auxiliary bass radiators (ABRs).



## Total design

A holistic approach, with no compromises.

The performance envelope of these drive units is so generous that they require only first order crossovers, ensuring maximum acoustic transparency and inaudible transitions.

Attention to detail is phenomenal, with gold plated bi-wire terminals assuring the cleanest signal transmission. On the floorstanders, the spikes are adjustable from the top to make levelling easier. All nine models are available in Black Oak, Linear White, Rosewood and European Walnut finishes.

Total design is another aspect of the difference with KEF. It's all about weaving truly great sound into the fabric of the lives we live now.



Q900 Black Oak



Q900 Linear White



Q900 Rosewood



Q900 European Walnut







Q900 7.1 Package



Q300 5.1 Package



Q500 5.1 Package



Q700 7.1 Package



Q100 5.1 Package

# the perfect system for your space

With a range that encompasses three assertive full-size floorstanders that combine the Uni-Q with the long-throw bass driver and two matching ABRs, two versatile high performance

bookshelf models, two compellingly articulate centre speakers, dipole rear effects speakers to enhance ambient effects and a magnificent 200W powered subwoofer to add weight and

integrity to the sound image, you can configure the perfect Q Series 5.1 or 7.1 system for your budget, room size and taste.

# specifications



Model	Q900	Q700	Q500	Q300
Design	Two and a half-way bass reflex	Two and a half-way bass reflex	Two and a half-way bass reflex	Two-way bass reflex
Drive units	200mm (8in.) aluminium Uni-Q 38mm (1.5in.) vented aluminium dome HF 200mm (8in.) aluminium LF 2 x 200mm (8in.) aluminium ABR	165mm (6.5in.) aluminium Uni-Q 25mm (1in.) vented aluminium dome HF 165mm (6.5in.) aluminium LF 2 x 165mm (6.5in.) aluminium ABR	130mm (5.25in.) aluminium Uni-Q 25mm (1in.) vented aluminium dome HF 130mm (5.25in.) aluminium LF 2 x 130mm (5.25in.) aluminium ABR	165mm (6.5in.) aluminium Uni-Q 25mm (1in.) vented aluminium dome HF
Frequency response (±3dB)	32Hz - 40kHz	36Hz - 40kHz	40Hz - 40kHz	42Hz - 40kHz
Crossover frequency	1.8kHz	2.5kHz	2.5kHz	2.5kHz
Amplifier	N/A	N/A	N/A	N/A
Amplifier requirements	15 - 200 W	15 - 150 W	15 - 130 W	15 - 120 W
Sensitivity (2.83V/1m)	91dB	89dB	87dB	87dB
Maximum output (SPL)	114dB	112dB	110dB	110dB
Impedance	8Ω	8Ω	8Ω	8Ω
Low pass filter variable	N/A	N/A	N/A	N/A
Low level signal inputs	N/A	N/A	N/A	N/A
Internal volume	N/A	N/A	N/A	N/A
Power requirements	N/A	N/A	N/A	N/A
Power consumption	N/A	N/A	N/A	N/A
Weight	22.1kg (48.7lbs)	17.2kg (37.9lbs)	15kg (33.1lbs)	7.7kg (17.0lbs)
Dimensions (H x W x D)	1060 x 244 x 322 mm (41.7 x 9.6 x 12.7 in.)	920 x 210 x 302 mm (36.2 x 8.3 x 11.9 in.)	870 x 180 x 272 mm (34.3 x 7.1 x 10.7 in.)	355 x 210 x 302 mm (14.0 x 8.3 x 11.9 in.)
Dimensions with plinth (H x W x D)	1107 x 359 x 322 mm (43.6 x 14.1 x 12.7 in.)	967 x 325 x 312 mm (38.1 x 12.8 x 12.3 in.)	917 x 295 x 312 mm (36.1 x 11.6 x 12.3 in.)	N/A



Black Oak

Linear White

Rosewood

European Walnut



Model	Q100	Q600c	Q200c	Q800ds	Q400b
Design	Two-way bass reflex	Three-way bass reflex	Three-way bass reflex	Three-way dipole	Closed-box subwoofer
Drive units	130mm (5.25in.) aluminium Uni-Q 25mm (1in.) vented aluminium dome HF	165mm (6.5in.) aluminium Uni-Q 25mm (1in.) vented aluminium dome HF 165mm (6.5in.) aluminium LF 165mm (6.5in.) aluminium ABR	130mm (5.25in.) aluminium Uni-Q 25mm (1in.) vented aluminium dome HF 130mm (5.25in.) aluminium LF 130mm (5.25in.) aluminium ABR	2 x 130mm (5.25in.) aluminium Uni-Q 2 x 25mm (1in.) vented aluminium dome HF	1 x 250mm (10in.)
Frequency response (±3dB)	49Hz - 40kHz	45Hz - 40kHz	50Hz - 40kHz	100Hz - 40kHz	28Hz - 140Hz
Crossover frequency	2.5kHz	500Hz, 2.5kHz	500Hz, 2.8kHz	300Hz, 2.5kHz	N/A
Amplifier	N/A	N/A	N/A	N/A	200W built-in Class-D
Amplifier requirements	10 - 100 W	15 - 150 W	15 - 130 W	10 - 100 W	N/A
Sensitivity (2.83V/1m)	86dB	87dB	85dB	85dB	N/A
Maximum output (SPL)	107dB	110dB	108dB	107dB	110dB
Impedance	8Ω	8Ω	8Ω	8Ω	N/A
Low pass filter variable	N/A	N/A	N/A	N/A	40Hz - 140Hz, 4th-order
Low level signal inputs	N/A	N/A	N/A	N/A	RCA phono sockets
Internal volume	N/A	N/A	N/A	N/A	23.2 litres
Power requirements	N/A	N/A	N/A	N/A	100 - 240V ac ~ 50/60Hz
Power consumption	N/A	N/A	N/A	N/A	200VA
Weight	5.9kg (13.0lbs)	14.1kg (31.1lbs)	11.0kg (24.3lbs)	7.4kg (16.3lbs)	13.6kg (29.9lbs)
Dimensions (H x W x D)	300 x 180 x 272 mm (11.8 x 7.1 x 10.7 in.)	210 x 629 x 302 mm (8.3 x 24.8 x 11.9 in.)	180 x 525 x 260 mm (7.1 x 20.7 x 10.2 in.)	180 x 348 x 180 mm (7.1 x 13.7 x 7.1 in.)	335 x 330 x 330 mm (13.2 x 13.0 x 13.0 in.)
Dimensions with plinth (H x W x D)	N/A	N/A	N/A	N/A	N/A

Not all models/ finishes are available in all markets. Contact your local dealer for specific range details.





[www.kef.com](http://www.kef.com)

KEF and Uni-Q are registered trademarks. Uni-Q and other KEF technologies are protected by worldwide patents. All text and image copyrights reserved. KEF reserves the right, in line with continuing research and development, to amend or change specifications. E&OE.