

100 years at the
forefront of audio
innovation.

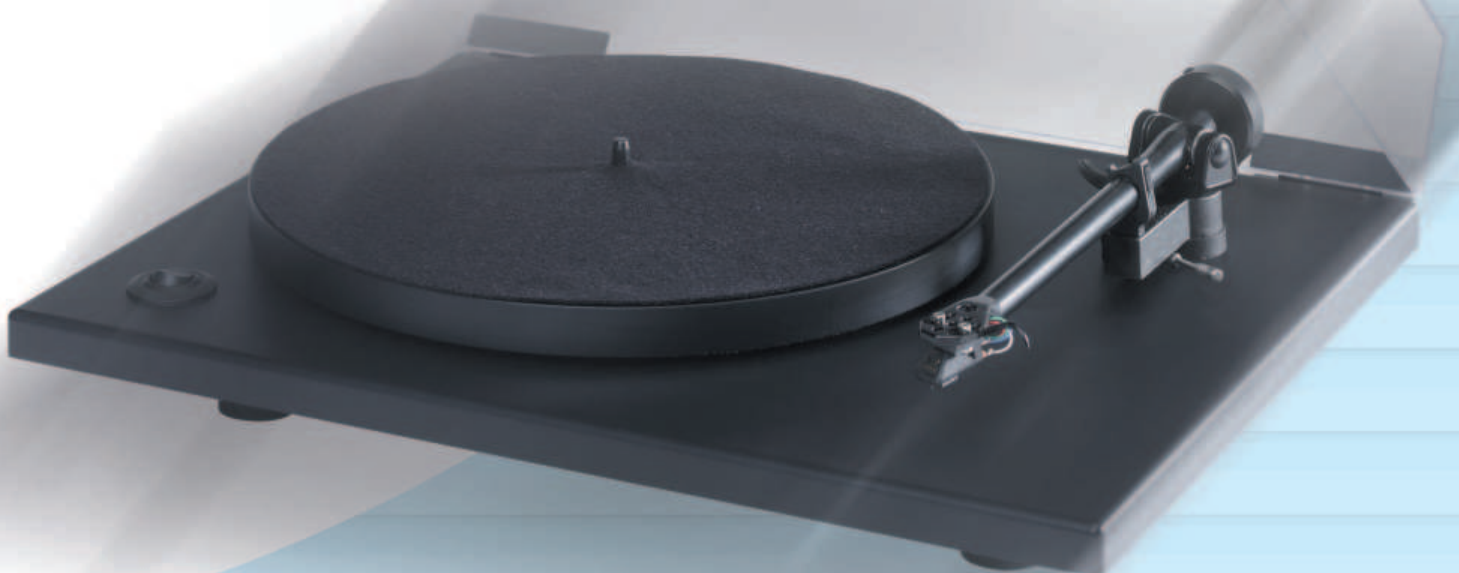


Established 1906.

Consider that short statement for a moment
– and the full meaning it conveys.

1906. A time before most of us were born. A time when houses were lit by gaslight and only three years after the Wright brothers' historic flight, Goldring were bringing the joy of great music into people's homes.

Goldring – 100 years of music.





Armour Home Electronics, Units 7 & 8 Stortford Hall Industrial Park, Dunmow Road, Bishops Stortford, Herts, CM23 5GZ United Kingdom
T: +44 (0)1279 501111 F: +44 (0)1279 501080 www.goldring.co.uk



 **Goldring**

2005 Portfolio

The design brief for the new Goldring GR1.2 and GR2 turntables was very simple. It was to design and produce two outstanding models that clearly set new standards in sonic performance at an affordable price.

With the help of some of the world's very best turntable engineers and designers, we believe we have comfortably achieved our goal. When you audition them, we are sure you'll agree.

For us, the musical performance is everything. No concessions have been allowed that would compromise this philosophy. For example, we have

chosen to incorporate manual speed change on both models. Automatic switching would cost more and degrade the performance. Instead, we put that cost into a very high quality 12-pole synchronous motor, of a type normally found in far more expensive products.

The Goldring tonearm is unrivalled at this price level, it features a close tolerance, double ball-race bearing assembly and a super rigid, one piece cast aluminium arm tube.

Optimum tracking is achieved with the aid of frictionless magnetic bias.



NEW

GR1.2

Simply outstanding performance at this price point.

The slim, elegantly designed GR1.2, is a manual, full size, two speed, belt-drive model. The tonearm is ready fitted and aligned with a high quality Goldring Elektra moving magnet phono cartridge.

TECHNICAL INFORMATION

- Goldring tone arm
- Cartridge: High performance moving magnet type (Goldring Elektra)
- Belt-drive, two speed
- 12mm Main bearing
- Motor: 12-pole synchronous type
- Platter: Low resonance, high density particle board
- Finish: Grey/black with clear hinged cover

WHAT HI-FI? SOUND AND VISION



Feb 2004

"...This turntable is cracking value... Goldring is back in business with a product to challenge the best in this price range..."

GRAMOPHONE

March 2004

"... (The GR1) should provide a strong challenge to Pro-Jects domination of this sector... in fact, it's an investment in your record collections future..."



Jan 2004

"...it was amazingly musical. It has real zest and gusto. It's remarkable for the money..."

CLASSIC fm

April 2004

"...This deck offers a great entry level purchase with sound quality to challenge CD players costing upwards of £200."

THE SUNDAY TIMES THE MONTH

March 2004

"...better than DJ decks at twice the price, it is deliciously detailed and open... The Goldring is good enough to put any digital devotee in a spin."

HI-FI CHOICE

April 2004

"...This deck offers a great entry level purchase with sound quality to challenge CD players costing upwards of £200."



NEW

GR2



The GR2 delivers a substantial sonic improvement over the GR1.2

First and foremost, the tonearm comes fitted with the ultra high quality Goldring 1012GX moving magnet cartridge which features the acclaimed 'Gyger II' profile stylus. This is a fine line type which produces exceptionally detailed and smooth treble, coupled with extremely low distortion.

The GR2 also boasts a large (18mm) main bearing, which aids sound quality by reducing rumble, whilst the low resonance platter contains a heavy metal insert which encircles the platter close to the outer rim. This increases both the platter's mass and fly-wheel effect, which in turn, improves speed accuracy and gives a more dynamic sound.



TECHNICAL INFORMATION

- Goldring tone arm with gold plated phono plugs
- Cartridge: Ultra high performance moving magnet type (Goldring 1012GX)
- Belt-drive, two speed
- 18mm Main bearing
- Motor: 12-pole synchronous type
- Platter: Low resonance, high density particle board with metal 'fly-wheel' insert
- Finish: Black with clear hinged cover

NEW

PA1

PHONO AMPLIFIER

Many modern amplifiers don't have a turntable input. The PA1 solves this problem by amplifying the signal from a moving magnet cartridge to a level suitable for the line inputs of an amplifier such as Auxiliary, Tape, Tuner etc.

Combining audiophile grade components with an exceptional adherence to RIAA specification, the PA1 delivers truly outstanding sonic performance and value.

In addition, the PA1 can also be used to upgrade the performance of most standard amplifier turntable inputs.



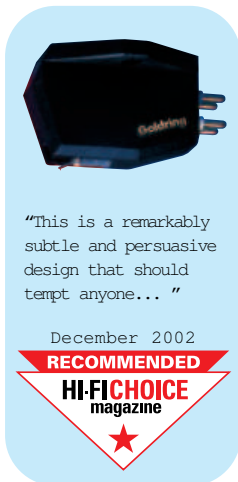
Just 26mm high, it fits neatly under the GR1.2 and GR2 turntables

Moving Coil Cartridges

Elite

The Elite is a high-performance low-output moving coil cartridge which incorporates Goldring's most recent design features, such as new magnetic circuitry, an ultra-rigid Pocan body and a Neodymium magnet.

The Elite incorporates a Gyger I line contact stylus providing maximum groove information retrieval and an outstandingly smooth and extended response. Optimum damping on both channels is achieved by symmetrically winding the low-mass armature. Silver wire is used for the coils - supplying much higher definition than is found in standard cartridge construction. The Elite represents the very best in British audio technology and design standards.



Eroica

The Eroica is a true audiophile moving coil cartridge which features an advanced pole shoe design using a powerful rare earth Neodymium magnet. This unique construction allows a shortened magnetic path, which helps reduce the amount of iron in the cartridge, keeping the weight down to just 5.5gms. Rigidity is also of prime importance and the Pocan body of the cartridge enables it to be clamped solidly to the headshell, keeping energy losses to an absolute minimum. This cartridge uses a Gyger II line contact stylus and is available in two forms, the high output Eroica H and the low output Eroica LX. The Eroica offers an exceptionally high standard of performance and reliability.



Replacement Styli

- D42 Stylus for 1042
- D12GX Stylus for 1012GX
- D152E Stylus for Elektra
- D22GX Stylus for 1022GX
- D06 Stylus for 1006
- D145 Stylus for Elan

Moving Magnet Cartridges

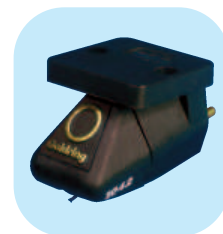
1000 Series

1042 The 1042 is a cartridge for the audiophile who demands the ultimate performance from their system. The extended groove contact of its Gyger S diamond gives the 1042 unsurpassed resolution of the fine groove modulations, producing an exceptionally detailed, smooth and musical sound quality.

1022GX The 1022GX is recommended for the discerning listener. The diamond stylus is a Gyger I fine line contact type which provides increased resolution and ensures the maximum accuracy of musical reproduction.

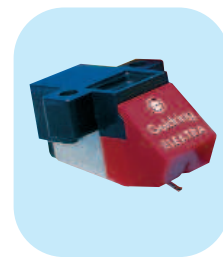
1012GX The Goldring 1012GX uses the acclaimed Gyger II diamond stylus. This is a fine line type which gives smooth extended high frequencies with low distortion and reproduces a highly detailed and dynamic sound. Advanced diamond tip polishing ensures excellent tracking ability and reduces record wear. The 1012GX has become one of Goldring's most popular cartridges.

1006 The Goldring 1006 is designed for owners who want to get the very best from their systems at a budget price. This cartridge has an Elliptical tip for improved high frequency clarity and a powerful magnet to ensure high sensitivity.



Elektra

The **Elektra** is a low-cost moving magnet phono cartridge which incorporates several audiophile features. Tracking ability is excellent and this cartridge uses an Elliptical stylus tip. The low-mass cantilever assembly has a surprisingly wide ranging compatibility with the best tonearms and turntables available.



Elan

The **Elan** has been specifically designed to cater for the demanding audiophile on a budget and, as such, is capable of remarkable results. The cartridge has a rigid body and fully enclosed mounting lugs and represents the most versatile low-cost choice cartridge on the market.



Cartridge Technical Specifications

| Transducer Characteristics | ELAN | ELEKTRA | 1000 SERIES | EROICA H | EROICA LX | ELITE |
|-----------------------------------|----------------------------|--------------------------------------|--|------------------------------|------------------------------|------------------------|
| Frequency Response | 20 Hz-20 kHz±3 dB | 20 Hz-20 kHz±3 dB | 20 Hz-20 kHz±3 dB | 20 Hz-22 kHz±3 dB | 20 Hz-30 kHz±2 dB | 20 Hz-30 kHz±2 dB |
| Channel Balance | 2dB @ 1kHz | 2dB @ 1kHz | 2dB @ 1kHz | 1dB max. @ 1kHz | 1dB max. @ 1kHz | 1dB max. @ 1kHz |
| Channel Separation | 20dB @ 1kHz | 20dB @ 1kHz | 25dB @ 1kHz | 25dB @ 1kHz | 25dB @ 1kHz | 25dB min. @ 1kHz |
| Sensitivity | 5mV±2dB 1kHz @ 5 cm/sec | 7mV ± 2dB. 1kHz @ 5 cm/sec | 6.5mV±1.5dB 1kHz @ 5 cm/sec | 2.5mV±1dB 1kHz @ 5 cm/sec | 0.5mV±1dB 1kHz @ 5 cm/sec | 0.5mV±1dB @ 1kHz |
| Static Compliance | 16mm/N | 16mm/N | 24mm/N lat. 16mm/N vert | 18mm/N | 18mm/N | 18mm/N |
| Equivalent tip mass | 0.7 mg | 0.7 mg | 0.45 mg | 0.6 mg | 0.35 mg | 0.35 mg |
| Vertical Tracking Angle | 26° | 26° | 24° | 20° | 20° | 20° |
| Stylus Radius | Spherical .0006" (15µ) | Elliptical .0007" x .0003" (18x7) | 1006 Elliptical 1012GX Gyger II 1022GX Gyger I 1042 Gyger S | Gyger II | Gyger II | Gyger I |
| Stylus Type | Replaceable | Replaceable | Replaceable | Non-Replaceable | Non-Replaceable | Non-Replaceable |
| Electrical Characteristics | | | | | | |
| Load Resistance | 47 k | 47 k | 47 k | 47 k | 100 | 100 |
| Load Capacitance | 150-400pF | 150-400pF | 150-200pF | 100-500pF | 200-1000pF | 100-500pF |
| Internal Inductance | 560 mH | 560 mH | 570 mH | 0.2 mH | 12 µH | 2 µH |
| Internal Resistance | 700 | 700 | 660 | 77 | 8 | 8 |
| Mechanical Characteristics | | | | | | |
| Cartridge Weight | 4.2g | 4.2g | 6.3g | 5.5g | 5.5g | 5.7g |
| Fixing Centres | 0.5" (12.7mm) | 0.5" (12.7mm) | 0.5" (12.7mm) | 0.5" (12.7mm) | 0.5" (12.7mm) | 0.5" (12.7mm) |
| Playing Weight | 1.5 - 3.0g (2.0g nom.) | 1.5 - 2.5g (2.0g nom.) | 1.5 - 2.0g (1.7g nom.) | 1.5 - 2.0g (1.7g nom.) | 1.5 - 2.0g (1.7g nom.) | 1.5 - 2.0g (1.7g nom.) |