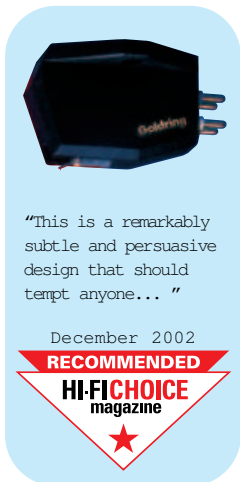


## Moving Coil Cartridges

### Elite

The Elite is a high-performance low-output moving coil cartridge which incorporates Goldring's most recent design features, such as new magnetic circuitry, an ultra-rigid Pocan body and a Neodymium magnet.

The Elite incorporates a Gyger I line contact stylus providing maximum groove information retrieval and an outstandingly smooth and extended response. Optimum damping on both channels is achieved by symmetrically winding the low-mass armature. Silver wire is used for the coils - supplying much higher definition than is found in standard cartridge construction. The Elite represents the very best in British audio technology and design standards.



### Eroica

The Eroica is a true audiophile moving coil cartridge which features an advanced pole shoe design using a powerful rare earth Neodymium magnet. This unique construction allows a shortened magnetic path, which helps reduce the amount of iron in the cartridge, keeping the weight down to just 5.5gms. Rigidity is also of prime importance and the Pocan body of the cartridge enables it to be clamped solidly to the headshell, keeping energy losses to an absolute minimum. This cartridge uses a Gyger II line contact stylus and is available in two forms, the high output Eroica H and the low output Eroica LX. The Eroica offers an exceptionally high standard of performance and reliability.



### Replacement Styli

- D42 Stylus for 1042
- D12GX Stylus for 1012GX
- D152E Stylus for Elektra
- D22GX Stylus for 1022GX
- D06 Stylus for 1006
- D145 Stylus for Elan

## Moving Magnet Cartridges

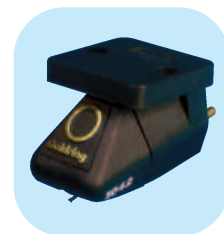
### 1000 Series

**1042** The 1042 is a cartridge for the audiophile who demands the ultimate performance from their system. The extended groove contact of its Gyger S diamond gives the 1042 unsurpassed resolution of the fine groove modulations, producing an exceptionally detailed, smooth and musical sound quality.

**1022GX** The 1022GX is recommended for the discerning listener. The diamond stylus is a Gyger I fine line contact type which provides increased resolution and ensures the maximum accuracy of musical reproduction.

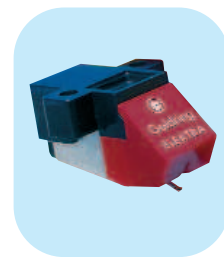
**1012GX** The Goldring 1012GX uses the acclaimed Gyger II diamond stylus. This is a fine line type which gives smooth extended high frequencies with low distortion and reproduces a highly detailed and dynamic sound. Advanced diamond tip polishing ensures excellent tracking ability and reduces record wear. The 1012GX has become one of Goldring's most popular cartridges.

**1006** The Goldring 1006 is designed for owners who want to get the very best from their systems at a budget price. This cartridge has an Elliptical tip for improved high frequency clarity and a powerful magnet to ensure high sensitivity.



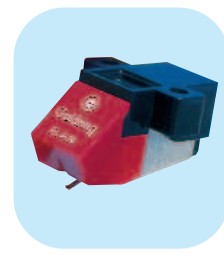
### Elektra

The **Elektra** is a low-cost moving magnet phono cartridge which incorporates several audiophile features. Tracking ability is excellent and this cartridge uses an Elliptical stylus tip. The low-mass cantilever assembly has a surprisingly wide ranging compatibility with the best tonearms and turntables available.



### Elan

The **Elan** has been specifically designed to cater for the demanding audiophile on a budget and, as such, is capable of remarkable results. The cartridge has a rigid body and fully enclosed mounting lugs and represents the most versatile low-cost choice cartridge on the market.



## Cartridge Technical Specifications

Transducer Characteristics	ELAN	ELEKTRA	1000 SERIES	EROICA H	EROICA LX	ELITE
Frequency Response	20 Hz-20 kHz±3 dB	20 Hz-20 kHz±3 dB	20 Hz-20 kHz±3 dB	20 Hz-22 kHz±3 dB	20 Hz-30 kHz±2 dB	20 Hz-30 kHz±2 dB
Channel Balance	2dB @ 1kHz	2dB @ 1kHz	2dB @ 1kHz	1dB max. @ 1kHz	1dB max. @ 1kHz	1dB max. @ 1kHz
Channel Separation	20dB @ 1kHz	20dB @ 1kHz	25dB @ 1kHz	25dB @ 1kHz	25dB @ 1kHz	25dB min. @ 1kHz
Sensitivity	5mV±2dB 1kHz @ 5 cm/sec	7mV ± 2dB. 1kHz @ 5 cm/sec	6.5mV±1.5dB 1kHz @ 5 cm/sec	2.5mV±1dB 1kHz @ 5 cm/sec	0.5mV±1dB 1kHz @ 5 cm/sec	0.5mV±1dB @ 1kHz
Static Compliance	16mm/N	16mm/N	24mm/N lat. 16mm/N vert	18mm/N	18mm/N	18mm/N
Equivalent tip mass	0.7 mg	0.7 mg	0.45 mg	0.6 mg	0.35 mg	0.35 mg
Vertical Tracking Angle	26°	26°	24°	20°	20°	20°
Stylus Radius	Spherical .0006" (15µ)	Elliptical .0007" x .0003" (18x7)	1006 Elliptical 1012GX Gyger II 1022GX Gyger I 1042 Gyger S	Gyger II	Gyger II	Gyger I
Stylus Type	Replaceable	Replaceable	Replaceable	Non-Replaceable	Non-Replaceable	Non-Replaceable
<b>Electrical Characteristics</b>						
Load Resistance	47 kΩ	47 kΩ	47 kΩ	47 kΩ	100 Ω	100 Ω
Load Capacitance	150-400pF	150-400pF	150-200pF	100-500pF	200-1000pF	100-500pF
Internal Inductance	560 mH	560 mH	570 mH	0.2 mH	12 µH	2 µH
Internal Resistance	700 Ω	700 Ω	660 Ω	77 Ω	8 Ω	8 Ω
<b>Mechanical Characteristics</b>						
Cartridge Weight	4.2g	4.2g	6.3g	5.5g	5.5g	5.7g
Fixing Centres	0.5" (12.7mm)	0.5" (12.7mm)	0.5" (12.7mm)	0.5" (12.7mm)	0.5" (12.7mm)	0.5" (12.7mm)
Playing Weight	1.5 - 3.0g (2.0g nom.)	1.5 - 2.5g (2.0g nom.)	1.5 - 2.0g (1.7g nom.)	1.5 - 2.0g (1.7g nom.)	1.5 - 2.0g (1.7g nom.)	1.5 - 2.0g (1.7g nom.)